

# Sample Techniques

## One-Step Cuff

No. 829

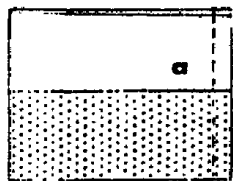


### 4-H Design and Construction

Cuffs can be applied in one step for quick sewing on many garments. Below are two easy methods.

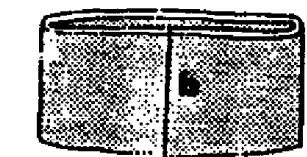
#### *Cuffs without Plackets*

This method should not be used on better garments or on sleeves which have a lot of fullness at the cuff. Fuse interfacing to the cuff. With right sides together, stitch the ends of the cuff to form a circle. Press the seam open. Fold the cuff in half lengthwise, wrong

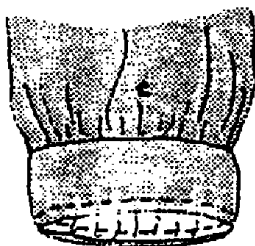


sides together.

With right sides together, pin and stitch the cuff to the sleeve, matching the cut edges. Trim the seam allowances to  $\frac{3}{8}$  inch,



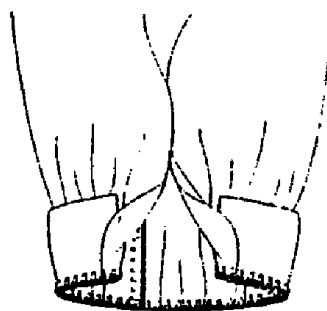
and zigzag the edges. Turn the seam up into the sleeve. Stitch-in-the-ditch at the underarm seam to hold the cuff in place.



#### *Cuffs with Slash Opening*

You can also apply a cuff with a slash opening in just one sewing step.

Finish the slash by applying a continuous lap or overlapping the edges.



Then match the cuff to the sleeve, right sides together. Fold edges of slash over ends of cuff and pin. Serge through all thicknesses. Turn and press.

*Adapted from "Serge and Sew," by Stretch and Sew, Inc., Eugene, OR, 1984, and The Complete Book of Sewing Short Cuts, by Claire B. Shaffer, Sterling, 1981.*

Name \_\_\_\_\_ Age \_\_\_\_\_

County \_\_\_\_\_ Years of Work \_\_\_\_\_

### ONE-STEP CUFF

Using the instructions on the opposite side, attach a sample of a cuff sewn in one step. You may use either method.

Does your cuff meet the following criteria?

Cuff is uniform width

Seam is trimmed and edge stitched

If cuff has slash, overlap is even

Stitching is smooth and even

Yes

No

\_\_\_\_\_

\_\_\_\_\_

\_\_\_\_\_

\_\_\_\_\_

\_\_\_\_\_

\_\_\_\_\_

\_\_\_\_\_

\_\_\_\_\_

### ONE-STEP CUFF

Year \_\_\_\_\_