

Oklahoma 4-H Shooting Sports
2023-2024 State 4-H Shooting Sports National Qualifying
Contests



OSU EXTENSION
4-H YOUTH DEVELOPMENT

Rule Book

Oklahoma 4-H Shooting Sports participants, volunteers, parents, and Extension Educators,

I want to say thank you for being a part of the Oklahoma 4-H Shooting Sports Program. We are one of the fastest growing projects in the 4-H program. Our focus is on Positive Youth Development and we use the shooting sports program as a tool to teach youth life skills. Safety is our top priority, but our program is founded on Education and Recreation.

I am excited to offer this rulebook for the Oklahoma 4-H Shooting Sports State Events. This resource will be a one-stop place for participants, volunteers, parents, and Extension Educators to get the latest rules and information about the Oklahoma 4-H Shooting Sports Program. This resource will include the Oklahoma 4-H Shooting Sports Policy, how scoring works, along with rules and information for each discipline.

The Oklahoma 4-H Shooting Sports qualifying contests are held annually to help determine the Senior 4-H members who will represent Oklahoma 4-H at the National 4-H Shooting Sports Championships. Junior and Intermediate members are not eligible to qualify for Nationals, but they do shoot for score and awards.

4-H Shooting Sports competition is a small part of our program, but often the most visible. Competition serves as an evaluation of how well 4-H youth have developed their skills within the shooting sports project. It is important to keep in mind the purpose and focus of our 4-H Shooting Sports program - **POSITIVE YOUTH DEVELOPMENT**. Let's make each year's event fun, educational and safe for all who attend. Good Luck!



OSU EXTENSION
4-H YOUTH DEVELOPMENT

Ruth Pratt

**Multi-County Specialist
Shooting Sports Coordinator**

505 AG Hall
Stillwater, OK 74078
405.744.4141 • 4h.okstate.edu



OKLAHOMA 4-H SHOOTING SPORTS GUIDELINES

2023
Original 1994

I. SITUATION STATEMENT

The Oklahoma 4-H Shooting Sports Program started in 1982. During that time, it developed into a 4-H Shotgun Sports Program with 17 counties in Oklahoma having a program. The program was revised in 1994 to include the following disciplines: air pistol, air rifle, archery, black powder/muzzle loading, hunting, living history, shotgun and coordinator. The shooting sports program in 2015 was revised to include the Western Heritage discipline.

The program revision in 1994 was modeled after the National 4-H Shooting Sports Program and is administered by a nationally certified state committee consisting of Extension staff and volunteers. Since 1994 leader training/certification meetings have been offered at least annually. A database of those persons who have successfully completed the training is maintained by the State Shooting Sports Coordinator in the State 4-H Office.

As of 2021, the Shooting Sports program has grown to be one of the largest 4-H projects in the state with over 1,000 adults having attended one or more discipline training workshops and over 2,400 youth enrolled in the Shooting Sports Project. As a result of the significant growth a review of the guidelines and rules for the various contests was in order. These following guidelines emerged from that review.

The program is designed to:

- Give youth thorough, safe instruction and training in the use of firearms and conservation.
- Enhance self-confidence, personal discipline, sense of responsibility, and sportsmanship.
- Provide volunteer instructors safe and proper instructional techniques and methods to teach youth.

The program relies on state 4-H certified/trained instructors to conduct classes in the various disciplines. Shooting Sports has the potential of being a high liability activity. Therefore, the program requires 4-H certified/trained instructors to adhere to the safety rules and regulations as dictated by the program to decrease the liability of such an educational experience.

The 4-H program is a youth development education program which uses a prevention education model that emphasizes positive youth-adult interaction and peer leadership. It uses skills and disciplines of safe shooting and hunter education to assist young people and their leaders in attaining knowledge and developing essential life skills. It creates an environment for a caring relationship between a young person and a significant adult, whether this is a family member, other adult or teen volunteer. These activities provide the opportunity for immediate gratification to the youth and satisfaction and self-worth to the adult/teen leader who acts as teacher and role model for younger 4-H youth members.

II. PROGRAM OBJECTIVES

1. Find and explore passions and interests
2. Engage in an effective 4-H program setting
3. Develop positive relationships with adults, youth, and peers
4. Explore a vast array of 4-H educational, recreational, and competitive activities
5. Thrive in multiple settings
6. Enhance developmental and long-term outcomes
7. Practice safe and responsible use of firearms and archery equipment, enhancing existing shooting, conservation, and hunter education programs
8. Explore the three national 4-H Mission Mandates (STEM, Healthy Living, Civic Engagement)
9. Model safety, sportsmanship, and ethical behavior
10. Strengthen knowledge and life skills

III. PHILOSOPHY

1. The program is open to all 4-H members. Youth must be actively enrolled in Oklahoma 4-H and have completed the Health Form prior to their participation in any shooting sports practice sessions or contests. Shooting Sports program participation starts upon enrolling on the youth's 9th birthday, or at any time thereafter. Beyond your first year of membership, age will be determined based upon the youth's age BEFORE August 1 of the current 4-H Program Year. For example, if a youth turns 12 on August 1st, he/she would still be considered to be 11 for that entire 4-H Program Year (even if this is their first year of membership). Youth can participate in contests beyond county level 30 days after enrollment AND after successfully completing the appropriate discipline training to be a certified participant. Participant's age and age division will be based upon the youth's age BEFORE August 1st for the entire 4-H Year based on the Oklahoma 4-H Membership Guidelines. National 4-H Shooting Sports Championship age rules will be followed to determine participation in the national contest.

The following minimum ages for participation will apply. 4-H members may participate in Air Rifle and Archery disciplines upon turning 9 years of age. All other shooting disciplines minimum age requirements will be based on the member's age BEFORE August 1st of the 4-H Program Year.

| <u>Discipline</u> | <u>Age Requirement</u> |
|-------------------------------------|------------------------|
| Air rifle | 9 years |
| Archery | 9 years |
| Hunting & Wildlife | 10 years |
| Living History | 9 years |
| Shotgun | 10 years |
| Air pistol | 12 years |
| .22 rifle* | 12 years |
| Western Heritage & Cowboy Action*** | 12 years |
| .22 pistol** | 14 years |
| Black powder/Muzzle Loading | 14 years |

* Youth must have successfully completed the Air Rifle project training **prior** to participation in .22 rifle.

** Youth must have successfully completed the Air Pistol project training **prior** to participation in .22 pistol.

*** Western Heritage and Cowboy Action: Youth certified in this discipline are not certified in .22 Pistol, .22 Rifle or Shotgun upon being certified in Western Heritage and Cowboy Action.

2. Certification of a 4-H member to be eligible to participate in a discipline contest will be determined by the appropriate discipline certified instructor(s) following established state and county shooting sports guidelines. The appropriate discipline certified instructor(s) may approve a certified participant for competition upon completion of the following:
 - In accordance with established guidelines, the participant consistently exhibits and follows all established safety procedures.
 - The participant demonstrates they have met the standards established by discipline instructor(s) either announced, implied or printed in the form of guidelines that have been reviewed and approved by the county Extension office.
 - The participant has met all deadlines announced or printed established by certified discipline instructors with approval by the county Extension office prior to entering the contest and paid appropriate registration fees by the established due dates.
 - The participant, on the county level, has experienced the shooting discipline events in which they will compete. This may be accomplished through explicit instructions of the contest taught during practice held

prior to attending the contest. This includes, but is not limited to regular county practice sessions and may also include having shot at a private or commercial shooting facility under the supervision of a discipline certified instructor.

3. Each participant has a reasonable expectation to enjoy a positive program experience. Therefore, the misbehavior of one participant, or a group of participants, will not be permitted to impact negatively on the program experience of others.
4. If the 4-Her is found in violation of the Code of Conduct, appropriate action(s) will be taken as described in the *Oklahoma 4-H Code of Conduct* guidelines.
5. When conducting educational events at 4-H camps or other 4-H functions 4-H shooting sports trained/certified instructors; or employees of agencies where firearm training is required, should be used. (For example, demonstrations by Oklahoma Dept. of Wildlife, law enforcement or other related agencies are appropriate when done in a safe and secured environment.) 4-H members will be allowed to shoot firearms under the guidance and supervision of a 4-H shooting sports trained/certified instructor(s) at the educational events at 4-H camps and other 4-H functions.
6. 4-H shooting sports trained/certified instructors may conduct a demonstration for a group of youth that are not 4-H members. As part of the demonstration to youth, participants are not allowed to touch, load or fire a firearm or bow. A 4-H shooting sports trained/certified instructor allowing participants to touch, load or fire a firearm or bow will be conducting activities outside their scope of authority and duties. Under these circumstances, 4-H health and accident insurance would not be in effect and the 4-H shooting sports trained/certified instructor would not be covered by the Oklahoma Tort Claims Act. The 4-H trained/certified shooting sports instructor(s) would be personally liable for any injury to a participant. A 4-H member that is a certified participant in a shooting discipline may assist a 4-H trained/certified instructor to conduct a demonstration for a group of youth that are not 4-H members. This certified 4-H member is not allowed to let non-4-H members to touch, load or fire a firearm or bow.
7. The primary goal of the Oklahoma 4-H Shooting Sports program is to teach young people how to safely and appropriately handle firearms and archery equipment. While it is understood that many parents choose to involve their children in this activity as a “prelude” to hunting activities, the Oklahoma 4-H Youth Development Program under **no circumstances** provides authority to volunteers to arrange or conduct live animal harvests with (or for) 4-H members or using the 4-H name and emblem.

IV. PROGRAM ADMINISTRATION

The Oklahoma 4-H Shooting Sports Program is administered through the state 4-H office with the assistance of district and county Extension Staff. The State 4-H Shooting Sports Coordinator, with oversight from the State 4-H Program Leader, has ultimate responsibility for program management and administration.

The Oklahoma 4-H Shooting Sports Program utilizes the 4-H Shooting Sports Advisory Board to **recommend** guidelines and procedures for state contests and events and to **assist** with educational and events for youth and adults. This committee includes the State 4-H Shooting Sports Coordinator, County Extension Educators, certified discipline instructors (Levels 1-3) and 4-H youth shooting sports ambassadors.

Instructor Certification Terminology

Level 3 Instructor: Certified to instruct at a National Certification Workshop

Level 2 Instructor: Attended and completed National Certification Workshop to instruct at state level workshops

Level 1 Instructor: Attended and completed State Certification Workshop to instruct at the county/local level

V. INSTRUCTOR CERTIFICATION REQUIREMENTS AND RESTRICTIONS

The program requires the use of National 4-H certified instructors (Level 2) to conduct certification workshops in the various disciplines (coordinator, air pistol, air rifle, archery, black powder/muzzleloader, hunting & wildlife, living history, shotgun, smallbore pistol, smallbore rifle and western heritage & cowboy action). Each county or extension unit must have a certified County Coordinator for the 4-H Shooting Sports Program. National 4-H certified instructors are to utilize clear barrel indicators or other safety devices that indicate a locked open action in all firearms during instruction training and stress their utilization in class and when certifying 4-H members.

Certification workshops will not be conducted on the campus of Oklahoma State University-Stillwater which includes the use or training for the use of weapons and firearms of any type. It is the policy of OSU to prohibit or strictly regulate the possession or use of weapons, firearms, ammunition, fireworks, explosives, and dangerous chemicals on the OSU-Stillwater campus.

Extension employees and 4-H volunteers, are granted a level of protection under Article VII, Section 701 (the Governmental Tort Claims Act) of Oklahoma Statute when they are functioning within the realm and scope of their duties. In order to help Extension professionals and volunteers understand what normal and reasonable duties might be, all individuals seeking to serve as an Oklahoma 4-H Shooting Sports Instructor must attend and successfully complete a 4-H Shooting Sports Certification Workshop. No person may be certified as a Level 1 instructor until the following requirements are met:

1. 21 years of age
2. Be a certified 4-H volunteer, recognized by the OSU Extension Center, in the county which they serve as a shooting sports instructor.

3. With the approval of Extension educator(s) in the county where they serve as a certified volunteer, they must attend and successfully complete a state recognized 4-H Shooting Sports certification workshop, which will include a minimum of 16 to 19 hours of instruction. Sixteen (16) hours must be registration and instruction for Shotgun, combination Rifle/Pistol class, Hunting Skills and Western Heritage/Cowboy Action and thirteen (13) hours for Pistol, Rifle, Archery, Black Powder/Muzzle Loading (including range safety), plus three (3) hours in 4-H Positive Youth Development and Risk Management.
4. Have no felony convictions.
5. The instructor in each class reserves the right not to certify a person if he/she does not demonstrate the ability to be a safe and competent instructor.

VI. DUTIES OF CERTIFIED SHOOTING SPORTS INSTRUCTORS

1. Keep focus of program on 4-H philosophy and Positive Youth Development.
2. To provide **basic** instruction to students.
3. The certified shooting sports instructor has the right to refuse participation from any shooting sports practice, event or activity in the interest of safety for the participant and others in the program.
4. Provide 4-H members a minimum of 8 hours of instruction within each shooting sports discipline in which the member is enrolled. These eight (8) hours include members completing the appropriate shooting sports curriculum and instructional time on the range. **NOTE:** While 8 hours or completion of the appropriate curricula is a minimum, this does not infer nor guarantee that a 4-H member has demonstrated the safety and skill necessary to participate in competitive events. Additional instruction may be necessary before a member is ready to participate in competitive events.
5. These 8 hours **do not** include time spent in the Oklahoma Department of Wildlife Conservation (ODWC) Hunter Education course. Nine (9) year old must provide an ODWC Certificate of Completion and upon turning 10 years old, the 4-H members must provide Hunter Education Card to Certified Discipline Instructor and OSU Extension Educator prior to participating in a shooting sports training certification or contest at any level.
6. Certified instructors are to have a copy of each 4-H member's ODWC Hunter Education card in their discipline's Risk Management binder.

7. Certified instructors are to have a 4-H member's *Youth Participation Form* available to them at all practice sessions and contest events.
8. Follow job description provided during certification workshops.
9. To report all classes conducted and students attending and/or trained to the County Extension Educator who will provide annual reports to the State 4-H Office and the State 4-H Shooting Sports Coordinator.
10. At least one certified discipline instructor on the county level is required to attend all 4-H shooting sport events and contests conducted on the local, county, region, district or state level. When a county's certified instructor(s) are unable to attend 4-H shooting sport events and contests, an arrangement may be made between two county Extension offices to have a certified instructor from a neighboring county supervise certified participants with the consent of certified instructors of both counties involved in the supervision.
11. Instructor to Participant Ratio: When working with youth actively participating on the firing line, an instructor must ensure the following ratios are strictly enforced. Each instructor may have under their supervision 8 youths (8:1 ratio) when any participant falls into the Junior division (9 to 11 year olds) and 10 youths (10:1 ratio) when all participants are in the Intermediate and Senior divisions (12 to 18 year olds). Other participants may be in attendance during this time so long as they are supervised by another adult and remain behind the range safety line ensuring all safety protocols are followed.

VII. RENEWALS AND RECERTIFICATION INSTRUCTOR GUIDELINES

1. To maintain certification a 4-H Shooting Sports instructor must teach or assist in teaching a class every two years or have assisted with shooting sports contests on the district or state level. This requirement must be documented through reporting *Annual Instructors Certification* by the county Extension office. This list is to be completed annually no later than July 15th to the State 4-H office.
2. Once certification lapses instructors must repeat the discipline and Positive Youth Development and Risk Management training at a recognized State 4-H Shooting Sports certification workshop to be re-certified.
3. Renewal will be required of all instructors when new teaching materials become available or when a program change is initiated by the Oklahoma 4-H Program Leader or the National 4-H Shooting Sports Committee which requires an update or mandatory shooting discipline recertification. **Level 1 Instructors must be re-certified a minimum of every 7 years or as determined by the State Shooting Sports Coordinator.**

VIII. REPORTING

Shooting Sports practice Sign-In sheets of classes shall be reported to the County Extension Educator. Records of certified 4-H members are to be updated in the Oklahoma 4-H Enrollment System prior to submitting contest registration forms for all state contests. The County Extension Educator should maintain this information from the various disciplines and report it annually to the State 4-H office.

Certified 4-H Instructors Certification form is to be completed at the conclusion of a shooting sports program and should be available to the State 4-H office no later than July 15th each year. This reporting of teaching activities will continue the certification of instructors who were teaching a discipline, assisted with the teaching a discipline or assisted to conduct district and state event.

Firearm Exemptions – to purchase and possess firearms, approval must be granted by the President of University. To receive approval of a new purchase, an application using the *Purchase Procedures Firearms, Bow and Shooting Sports Supplies* must be made which details the purpose of the request, an *Annual County Safety Plan* which is a process of accounting for the use, storage and maintenance of the firearms must be on file at the State 4-H office and *Firearm Inventory List* report of storage and maintenance of firearms is to be completed twice a year. Firearm inventory and inspection is to be completed annually no later than July 15th and a copy submitted to the State 4-H office attached to the Annual Safety Plan. The January 15th inspection does not need to be submitted to the State 4-H Office. A copy of both semi-annual firearm inspection reports are to be kept on file in the county Extension office.

IX. HUNTER SAFETY EDUCATION VERIFICATION

As of June 14, 2002 all participants must complete the Hunter Education Safety Program to be eligible for the 4-H Shooting Sports Program. Youth enrolled in the Shooting Sports Program are strongly encouraged to successfully complete a Hunter Safety course before shooting a firearm; if training is not available at the time of enrollment, youth must successfully complete a Hunter Safety Course within one year from the date of enrollment to continue to participate in the Oklahoma 4-H Shooting Sports Program. Nine (9) year old must provide an Oklahoma Department of Wildlife Conservation Certificate of Completion. Upon turning 10 years old, the 4-H members must provide Hunter Education Card to Certified Discipline Coach and OSU Extension Educator.

X. FUNDING

1. Grants – due to state laws regarding the possession of firearms on university campuses and because 4-H is part of the land-grant university system, all funds used to secure firearms and bows **must** be handled through Ag. Sponsored Programs at Oklahoma State University. Individuals or entities that fail to secure approval for acquiring funds and who then do receive funds assume a higher degree of liability and are not recognized by the 4-H Program and are not authorized to use the 4-H name and emblem in the state of Oklahoma. *Annual County Safety Plan and Firearm Inventory Report* for Oklahoma 4-H Shooting Sports must be on file in the State 4-H Office prior

to approval of any grant requests being made by a certified shooting sports instructor on behalf of any shooting sports discipline, club or county shooting sports program.

XI. 4-H SHOOTING SPORTS ARCHERY AND GUN POLICY

The purpose of the 4-H Shooting Sports Program is to promote youth development through the safe and responsible use of archery equipment and firearms. Pointing any type of firearm or archery equipment that is capable of discharging a projectile by gunpowder, gas or other means of propulsion including without limitation, shotguns, rifles, handguns, pellet guns, BB guns, flare guns, paintball guns, air guns, bows, laser guns or laser sighting devices at any person or any humanoid or tombstone target is inappropriate and dangerous. Therefore, the Oklahoma 4-H Program, Oklahoma 4-H Shooting Sports Committee and the National 4-H Shooting Sports Committee are unequivocally opposed to such use in the 4-H program.

XII. AMMUNITION RELOADING POLICY

Oklahoma 4-H has made the following guideline regarding reloading of any ammunition in the 4-H program.

1. New factory ammunition will be required (no reloads) for all Shooting Sports events including adult certification training, practices, camping activities, matches, contests, special events, etc.
2. The certified 4-H participant and certified 4-H instructor assume full responsibility and liability for the safety of the ammunition used including the safety of others on the range.
3. All ammunition is subject to random inspection by any range official or certified 4-H instructor. Rounds or shells may be disassembled and checked for compliance with original loading data and accuracy.

2023-2024 Calendar of Events

Due Date for Trap and Skeet– October 10, 2023

Due Date for .22 Rifle, .22 Pistol and Muzzleloader – October 16, 2023

Due Date for Archery/Hunting Skills and Sporting Clays – October 30, 2023

Due Date for Air Rifle and Air Pistol – November 28, 2023

| Event | Date | Location |
|--------------------------------------|---------------------------|--|
| State Trap | | El Reno – Oklahoma Trap Assn. |
| State Skeet | October 22 nd | OKC Gun Club – Shotgun Div. |
| State .22 Rifle and .22 Pistol | October 28 th | OKC Gun Club – Muzzleloader Range |
| State Muzzleloader | October 29 th | OKC Gun Club – Muzzleloader Range |
| State Outdoor Archery/Hunting Skills | November 11 th | Payne County Fairgrounds |
| State Sporting Clays | November 12 th | Quail Ridge Sporting Clays – McCloud, OK |
| State Air Rifle and Air Pistol | December 9 th | Kingfisher County Fairgrounds |

***Registration and Fees**

Registrations must be emailed to ruth.pratt@okstate.edu AND mailed to Oklahoma 4-H 505 Ag Hall Stillwater, OK 74078 by the deadlines listed above. All registrations must have the signature of a certified coach AND the Extension Educator.

- Skeet – \$35
- Trap – \$35
- .22 Rifle – \$15
- .22 Pistol – \$15
- Muzzleloader – \$15
- Archery/Hunting Skills – \$15
- Sporting Clays – \$35
- Air Rifle – \$15
- Air Pistol - \$15

*No refunds will be issued unless event is cancelled. All entry fees must be paid by the deadline by County Agency Check ONLY (personal checks will not be accepted). Payment WILL NOT be accepted the day of the event. Late fees for entries submitted after 5pm on the listed deadline will be double the original registration fee per participant.

Oklahoma 4-H Shooting Sports National Team Selection

The Oklahoma 4-H National Shooting Sports team is chosen each year based on scores from the state contests that are traditionally held in the fall of the program year. This is to tell you how that process works and how the teams are chosen for each discipline. There is an example below that depicts a Muzzleloader contest, but the concept is the same across the board.

Scores from each event are taken into consideration. At the conclusion of each event, youth are assigned a percentage. The high score will receive a 1, and all youth under the high score receive a percentage of that score. After all three events are completed the percentages are added together to give us the top 4 youth and all alternates. This process is similar to grading on a curve but allows all portions of the contest to be scored evenly so silhouettes will have the same value as the other two rounds.

SHOTGUN REQUIRED EVENTS

| | | |
|----------------|-------|------|
| Sporting Clays | Skeet | Trap |
|----------------|-------|------|

ARCHERY REQUIRED QUALIFYING EVENTS

| | | |
|------|-------|----|
| FITA | Field | 3D |
|------|-------|----|

SMALLBORE RIFLE REQUIRED QUALIFYING EVENTS

| | | |
|----------------|---------------------------|----------------|
| NRA 3 Position | CMP Rimfire sporter rifle | NRA Silhouette |
|----------------|---------------------------|----------------|

SMALLBORE PISTOL REQUIRED QUALIFYING EVENTS

| | | |
|--------------------|------------------|------------------------------------|
| Slow Fire Bullseye | Camp Perry Round | Smallbore Hunter Pistol Silhouette |
|--------------------|------------------|------------------------------------|

MUZZLE LOADER REQUIRED QUALIFYING EVENTS

| | | |
|------------------|--------------------------------------|---------------------------------|
| 50 Yard Bullseye | 25 Yard Novelty Critters and Bottles | Muzzle loading Rifle Silhouette |
|------------------|--------------------------------------|---------------------------------|

AIR RIFLE REQUIRED QUALIFYING EVENTS

| | | |
|--|------------------------------------|----------------|
| National STD Three Positions Sporter Air Rifle | Sporter Air Rifle Event (Standing) | NRA Silhouette |
|--|------------------------------------|----------------|

AIR PISTOL REQUIRED QUALIFYING EVENTS

| | | |
|--------------------|------------------------|-----------------------|
| Slow Fire Bullseye | Single Shot Rapid Fire | Air Pistol Silhouette |
|--------------------|------------------------|-----------------------|

Modified Percentage Example

| Name | County | Placing | % | Slow Fire Bullseye | Xs | % | Placing | Bottles & Critters | Xs | % | Placing | Silhouette | % | Placing |
|--------------|--------|---------|----------|-----------------------|----|--------|---------|-----------------------|----|--------|---------|------------|--------|---------|
| Chris Clover | Clover | 1 | 2.811709 | 74 | 1 | 0.9367 | 2 | 60 | | 1.0000 | 1 | 7 | 0.8750 | T-2 |
| Sally Sample | Sample | 2 | 2.691667 | 79 | | 1.0000 | 1 | 49 | | 0.8167 | 4 | 7 | 0.8750 | T-2 |
| Casey Clover | Clover | 3 | 2.673101 | 67 | | 0.8481 | 5 | 57 | | 0.9500 | 2 | 7 | 0.8750 | T-2 |
| Sadie Smith | River | 4 | 2.265401 | 71 | | 0.8987 | 4 | 22 | | 0.3667 | 7 | 8 | 1.0000 | 1 |
| Cory Stone | Rock | 5 | 2.097468 | 63 | | 0.7975 | 6 | 48 | | 0.8000 | 5 | 4 | 0.5000 | 6 |
| Sammy Sample | Sample | 6 | 1.903376 | 74 | | 0.9367 | 3 | 13 | | 0.2167 | 9 | 6 | 0.7500 | 5 |
| Kelly Green | River | 7 | 1.780485 | 61 | | 0.7722 | T-7 | 53 | | 0.8833 | 3 | 1 | 0.1250 | 9 |
| Pete Stone | Rock | 8 | 1.335654 | 41 | | 0.5190 | 9 | 34 | | 0.5667 | 6 | 2 | 0.2500 | T-7 |
| Sarah Smith | Plains | 9 | 1.322152 | 61 | | 0.7722 | T-7 | 18 | | 0.3000 | 8 | 2 | 0.2500 | T-7 |

General Rules

1. **4-H Membership** – All 4-H Shooting Sports members in good standing and meeting the criteria below are eligible to compete in 4-H shooting sports events. 4-H participants must be enrolled and in the enrollment system as an “Active” 4-H member, have been a 4-H member at least 30 days prior to the contest date and certified (completed first shot fundamentals and minimum 8 hours of instruction with a 4-H certified shooting sports level 1 instructor) in the 4-H shooting sport discipline they wish to participate in.
2. **Age Requirements** – Senior Division participants must be age 14 **PRIOR TO August 1, 2023**, have not graduated from High School or its equivalent and may not have passed their 19th birthday BEFORE August 1, 2023 to be eligible participate in the Oklahoma 4-H contest and may not have passed their 19th birthday BEFORE January 1, 2023 to be eligible for the 4-H Shooting Sports National Championships. Junior Division must be 9-11 years of age PRIOR to August 1, 2023 (with the exception of archery and air rifle only). Intermediate Division must be 12-13 years of age PRIOR to August 1, 2023.

The following minimum ages for participation will apply. 4-H members may participate in Air Rifle and Archery disciplines upon turning 9 years of age. All other disciplines minimum age requirements will be based on the member's age BEFORE August 1st of the 4-H Program Year.

| <u>Discipline</u> | <u>Age Requirement</u> |
|-------------------------------------|------------------------|
| Air rifle | 9 years |
| Archery | 9 years |
| Hunting & Wildlife | 10 years |
| Living History | 9 years |
| Shotgun | 10 years |
| Air pistol | 12 years |
| .22 rifle* | 12 years |
| Western Heritage & Cowboy Action*** | 12 years |
| .22 pistol** | 14 years |
| Black powder/Muzzle Loading | 14 years |

* Youth must have successfully completed the Air Rifle project training **prior** to participation in .22 rifle.

** Youth must have successfully completed the Air Pistol project training **prior** to participation in .22 pistol.

*** Western Heritage and Cowboy Action: Youth certified in this discipline are not certified in .22 Pistol, .22 Rifle or Shotgun upon being certified in Western Heritage and Cowboy Action.

3. **Hunter's Safety Certification** – In order to participate in Oklahoma 4-H Shooting Sports Contests youth must possess their Hunter's Safety Certification number (if under 10 years of age a certificate will suffice). Hunter's Safety Certification can be obtained online through the Oklahoma Department of Wildlife Conservation.

4. **Teams** – Teams will consist of 3-4 youth in the **same age division** (Youth **CANNOT** move up an age division to form a team). Team members will still compete as an individual for awards in their age division. Team scores will be based upon the top 3 scores submitted for that team (teams consisting of 4 participants will drop the low score).
5. **Registration** – Registration form is to be completed by the certified level 1 instructor along with the 4-H Educator. By signing the registration form you are agreeing to the following: **“**By signing this form, I hereby certify that the youth listed have met the minimum requirements to participate in this event (Enrolled in 4-H for 30 days, minimum of 8 hours of instruction, Hunter’s safety certification card, demonstrated safe handling and transportation of firearm and equipment.)”**
No additions will be made the day of the event. If you have scratches before the deadline please inform your Extension Educator so event staff can plan accordingly. Squads and firing points will be pre-assigned. Check-in on contest day will be done by the County’s certified level 1 instructor only. All participant’s items will be released to the level 1 instructor that signed the registration.
6. **Equipment Check-in** - Sharing equipment is allowed, but no more than two people on a team may share a piece of equipment. This is an allowance that helps those teams and individuals with limited resources, while at the same time, helps match efficiency by limiting the number of relays that must be conducted.
All firearms and archery equipment, except shotgun, must be checked prior to the start of official competition. Shotgun discipline participants do not need to check-in their guns or equipment prior to competing.
Spot check of equipment may take place on the range prior to, during, or after any match. Chief Range Officers may verify check-ins on the range. Spot checks prior to or following any competitive event are permitted and likely. Participants whose equipment does not meet the event standards will be given an opportunity to adjust or to modify equipment to bring it into compliance prior to a second check. Check-in staff may be able to assist in that process if needed. Equipment failing to meet specifications during on-range spot checks will result in disqualification.
Rifles must make weight with the magazine inserted in the rifle.
All arrows brought to the Archery check-in tables must be stored in a quiver or a storage container.
During check-ins, firearms must be brought to the check-in stations cased with a Clear Barrel Indicator (CBI) in place and the action open. Safe handling is imperative, particularly with respect to muzzle control. A site for opening cases will be designated.
Participants are limited to checking in a maximum of three firearms or bows during the official equipment check-in period. Chief Range Officers may verify a backup firearm or archery equipment, if needed, on the practice range.
7. **Range Protocols** - *Note: In this section, "firearm" is broadly defined to include all rifles, pistols, shotguns, and muzzle loading arms regardless of type or action, including air guns. Range safety protocols will be strictly and vigorously enforced.*
Chief Range Safety Officer will wear bright pink vest. Range Safety Officers will wear bright orange vests.
Firearms will be the last piece of equipment brought to the range by the participants and the first piece of equipment to be removed from the range at the end of each event. When moving among positions, e.g., to different firing points in silhouette, the action must be open, ECI or CBI in place, and the muzzle pointed in a safe direction.
All firearms will remain cased until the participant prepares to take the range for their relay and the range officer has declared the range ready. ECIs or CBIs will be in place until the participant is on the firing line and will be replaced in the action prior to leaving the firing line.
No participant shall rest the muzzle(s) of a shotgun or any other firearm on a shoe, toe pad or similar device such that the muzzle points at any part of an individual’s body.

Deliberate shooting or attempting to shoot any living animal while on competitive ranges is grounds for ejection from the event or from the match.

Safety is the first priority for range staff, participants, coaches, and spectators. Standard and accepted range and shooting safety rules will be followed at all times. Any site-specific safety considerations will be announced at the appropriate venues. Match Directors, Range officers, or other event staff may caution, warn, or eject any person on any range for unsafe behavior. Such ejection may result in forfeited scores, disqualification, or ejection from the grounds. Any spectator contributing to unsafe behavior or rules violations may be barred from the ranges by event management.

Cell Phones and Other Electronic Devices

Except in emergency situations, NO cell phones, radios, or other electronic communication devices may be used by participants or others on or in the immediate vicinity of competitive ranges during active competition.

Ranging, Walking or Previewing Ranges

In any contest where estimating ranges is inherent in the contest, use of range finders, previewing ranges, communicating distances to later participants or similar actions are not allowed. These actions are grounds for disqualification for any individual or team involved.

Eye and Ear Protection Requirement

Eye Protection: Adequate eye protection (shooting glasses, safety glasses or safety goggles, or hardened prescription glasses) are required for all participants in muzzleloading, pistol, rifle, and shotgun events. Coaches or spectators on or near firing lines are subject to the same requirements.

Ear Protection: In muzzleloading, shotgun, smallbore pistol, and smallbore rifle, all participants and those on firing lines must have adequate hearing protection. No earbuds allowed.

8. **Reasonable Accommodation** – To request a disability-related accommodation to participate the individual, level 1 instructor, or County Extension Educator MUST contact the Oklahoma 4-H Shooting Sports Coordinator by the entry deadline. Those instances require a written petition supported by a physician's written statement detailing the accommodation, the issues preventing the use of standard position or positions, or modifications in equipment required to permit participation in the event.
9. **Coaching** –Coaches may not create a disturbance, upset either their participants or others, create unnecessary delays, or otherwise interfere with the safe and efficient operation of the range and execution of the matches. Coaches may assist participants during prep time, setting up equipment, spotting sighter shots, and offering positive advice and support. Unless called to the line by range officials, coaches will remain in the coaches' area. The coach's area will be set up behind the participant ready line. Coaches will remain behind that line once preparation time ends, unless called to a firing point by a range safety officer. Once record shooting begins, no coaching is permitted unless initiated by the participant through the range officer and with his or her permission. Coaches may NOT initiate contact with their participants. Coaches may not handle firearms or equipment once the match has begun, nor may they advance to the firing line unless authorized by the range officer. Coaches may use spotting scopes to observe shot placement. NO cell phones, radios, or other electronic communication devices may be used by participants, coaches, or others on or in the immediate vicinity of competitive ranges during active competition. Specific coaching instructions may be issued on the ranges for each event.

Shotgun Rules

1. All shotguns must remain unloaded and actions open and empty with empty chamber indicator in place until the participant is on the line ready to shoot. Break action shotguns may have the actions closed when they are in the rack. Violation of this rule may subject the participant to immediate disqualification.
2. No reloaded ammunition allowed at any 4-H Event.
3. Participants cannot insert a live round (shell) into the firearm until the person before them has shot and they are in the shooting window and ready to call for a target.
4. No portion of the muzzle shall be allowed to come into contact with any portion of the participant's body. (i.e.: toe rests are not allowed.) A two-handed carry is required while carrying uncased rifles, shotguns and muzzleloaders on the firing line and between stations or ranges. Muzzles are ALWAYS to be pointed in a safe direction.
5. All Shotgun participants are required to bring and use eye and ear protection.
6. No release triggers allowed.
7. Any shotgun 12 gauge or smaller, capable of firing two shots without reloading (single shot shotguns are acceptable for Trap), and firing target ammunition for that gauge with a maximum load of 1 ½ ounce of size 7 ½, 8, 8 ½, or 9 shot may be used in this event. Factory loads are required.
8. Targets will be set the morning the shoot starts and will not be reset except by venue staff if needed.
9. Participants are to verify and sign their score card to acknowledge and agree upon their recorded scores. All score cards must be signed by the scorer and participant. Unsigned scorecards will not be tabulated. Once participant has signed the scorecard, office staff will verify the scores. If the score is too high, office staff will adjust the score accordingly. If the score is too low, office staff will verify but the low score that the participant signed off on will stand
10. Standard clay targets of consistent coloration will be used in all 4-H shotgun events.
11. The same team members must shoot both rounds and any tie-breakers.
12. Each team will supply an adult puller for their round in Trap, Skeet and Sporting Clays.
13. Each team must supply an adult scorer. Under no circumstance will a county score itself.
14. The target shall be thrown immediately upon the call. Only the line official may determine a late pull. (If a participant shoots, the result of the shot is scored.)
15. Participants are allowed two failure to fire alibis per round (50 targets per round).
16. Subsequent failures to fire will be counted as a lost target(s).
17. All lost targets will be called immediately by the line official as "Lost or Missed".
18. Hit / Broken Target: A target is scored as hit or broken when at least one visible piece of the target is broken or separated from the target. A target change of direction is not considered a visible piece.
19. Lost / Missed Target: A target is scored as lost or missed when it is not hit during its flight. The absence of a visible, separated target piece is considered a lost or missed target. A target is also scored as lost or missed if it is fired upon out of order or in the event of a non-alibied failure to fire (see previous rule # 15 above).
20. No Target: A target declared "no target" by the line official must be repeated regardless of the actions of the participant or result of any shot.
21. A repeat target must be thrown in the following situations, regardless of the participant's response to the target. a. A broken target was thrown. b. The target was thrown from the wrong house. c. A target of distinctly different color is thrown. d. Either target of a true pair or simultaneous pair is irregular. e. A single target is thrown for a double. f. The participant fires out of turn. g. Another participant fires at the same target. h. The line officer cannot, for some reason, determine whether the target is lost or a "no target."

22. Repeat targets may be thrown under the following conditions, if the participant does not fire at the target: a. The target was thrown before the participant called for it. b. The target was not thrown within the allowable time limits. c. The target flutters, takes an irregular course or has inadequate velocity.
23. If a participant thinks that the scorer has miscalled a lost target (miss) the participant must immediately challenge the call (before the next shot is fired) to the line official. Once the next shot is fired, the ability to challenge a call is lost. The outcome of the challenge of a score will be determined by the line official and the scorer. This decision is final. The challenge must be made by the participant. Challenges by coaches, parents or leaders are not allowed.
24. All official protests must be immediately made by the individual participant. Such protests must be made before the team or individual leaves the field. The field is defined as the area from the scorer to the firing line.
25. Teams unable to field a minimum of 3 original team members for a tie-breaker or shoot-off shall forfeit the tie.
26. Individuals unable to shoot in a tie-breaker or shoot-off shall forfeit the tie.
27. If a shot is fired without calling for a target, it will be called a lost target the first time it happens. On the second occurrence, the participant will be disqualified.
28. All questions and rulings will be the responsibility of the chief range officer and/or Oklahoma 4-H Shooting Sports Coordinator.
29. Any firearm built or modified to give the distinct impression of a modern military style firearm such as an AR or AK is not allowed in the 4-H Shooting Sports Program. Listed below are visual examples of, but not limited to, firearms that resemble those not allowed. Examples of unacceptable firearm components include: any type of muzzle devices (muzzle brake, recoil compensator, suppressors, porting), front pistol grips, heat shield/shroud, and magazines extending more than 1 inch below the receiver. Ported barrels are permitted on shotguns & pistols.
30. Suppressors are not permitted.

General Shotgun Scoring

1. Clay targets will be scored either a hit (broken) or lost (missed) target.
2. Hit / Broken Target: A target is scored as hit or broken when at least one visible piece of the target is broken or separated from the target. A target change of direction or dusting is not considered a visible piece.
3. Lost / Missed Target: A target is scored as lost or missed when it is not hit during its flight. The absence of a visible, separated target piece is considered a lost or missed target. A target is also scored as lost or missed if it is fired upon out of order or in the event of a non-alibied failure to fire (see previous rule # 15 above).
4. No Target: A target declared "no target" by the line official must be repeated regardless of the actions of the participant or result of any shot.
5. Questions about a call need to happen immediately following the questionable shot. All protests must be done by the participant. If a call is questioned, the Scorekeeper can consult with the Puller. The decision of the Scorekeeper will be final.
6. Participant's are responsible for adding and verifying scores. Once a scorecard is signed and turned in the score cannot be changed by the participant. Scores will be verified by event management. Participants that give themselves too many points will be corrected. Participants who short themselves points will receive the lower score they signed off on as being correct.

Sporting Clays Rules

1. Sporting Clays will consist of 1 round of 50 targets for intermediates and seniors.
2. Each Squad will receive 1 view pair per station.
3. Participants will compete shooting a total of 50 targets. The course will be determined by the event management. The pattern of targets will remain the same throughout the competition.
4. Participants will rotate the order in which they shoot each station. The first participant at the station will rotate to the bottom of the order at the next shooting station.
5. All pairs will be report pairs (call for first target, after shot the second target will be thrown). A menu will be provided at each station.
6. Participants may change chokes prior to stepping into the "Participant's Window". Chokes can't be changed after stepping into the "Participant's Window" or in-between pairs of targets.
7. If the first target of the pair comes out broken, then the target will be thrown again. If the target was shot, it does not count. If the second target of the pair comes out broken, then the second target is to be reshot. The score on the first target will stand as originally scored. The first target will not be reshot.
8. No reloaded ammunition allowed at any 4-H Event.
9. The participant's feet must be behind the front opening of the participant's stand.
10. NO SPECTATORS ALLOWED ON THE COURSE! 4-H participants, scorekeepers, pullers, and safety officers ONLY.

Sporting Clays Scoring:

1. Each county will provide an adult scorekeeper. Under no circumstance will a county score itself.
2. Participants are allowed two failures to fire per round. Subsequent failures to fire will be counted as a lost target.
3. Ties: Event management will determine the order of the stations in which ties will be broken, there will be no shoot-offs in Sporting Clays.

Skeet Rules

1. Skeet will consist of 2 rounds of 25 targets for juniors, intermediates, and seniors.
2. There will be six practice rounds. Two practice rounds each at stations #1, #4 and #7. Participants choice of singles or doubles.
3. Participants will compete in a standard skeet round featuring single high and low house targets and a simultaneous pair from stations 1, 2, 6 and 7, single targets from stations 3, 4, 5 and 8. An optional target will be taken on the first missed, or as a second target on station 8 low house. When shooting doubles the target from the nearer house (outgoers) must always be taken first.
4. No reloaded ammunition allowed at any 4-H Event.
5. A participant must stand with part of both feet within the boundaries of the shooting station.
6. Participants may take a brief practice swing prior to calling for the target.
7. A participant must shoot one shot per target. If a participant shoots at the first target and misses, then shoots the second shot at the same target, the score will be "lost/lost" no matter what the result of the second shot is.
8. If two targets are thrown simultaneously in singles, and the participant breaks or misses the correct target, it will be scored as shot. If the participant refrains from firing, they will be thrown a new target.

Skeet Scoring:

1. Under no circumstance will a county score itself.
2. Participants are allowed two failures to fire per round. Subsequent failure to fire will be counted as a lost target.
3. Ties: Top 5 individuals and Top 3 teams if tied will compete in a shoot-off. Both team and individual ties shall be broken by the chief range officer or his/her designee. The preferred method is by shooting Doubles from

stations 3, 4, and 5, miss and out by station. Team shoot-offs will follow the same procedure, each team member shooting at the same station. Any team or individual failing to respond to a call for shoot-offs three times will forfeit the tie. Other methods may be employed.

Trap Rules

1. Teams will report to scheduled trap field no less than one hour before registered time, times are an estimation not an appointment and teams not ready when fields are open within 15 minutes of their start time will be skipped with no time guarantee of time the rest of day.
2. There is to be NO downtime between rounds
3. Field clean-up happens after your squad shoots their 2nd round
4. Signing of scorecards is to happen prior to the end of clean-up
5. No reloaded ammunition allowed at any 4-H Event.
6. The participant's feet must be behind the front line at the 16-yard line.
7. No chokes may be changed after the round has begun.
8. Each county should provide a puller and scorekeeper for each squad entered
9. Each squad is allowed 5 practice shots (1 at each station) prior to beginning the first round. Bring at least 32 shells with you for the first round as we will not have a break between practice and round 1.

Trap Scoring:

1. Under no circumstance will a county score itself.
2. Participants are allowed two failures to fires per round (50 Targets). Subsequent failure to fires will be counted as a lost target.
3. Ties: Ties: Top 5 individuals and Top 3 teams if tied will compete in a shoot-off. Both team and individual ties shall be broken by the chief range officer or his/her designee. The preferred method is by shooting a full 25-shot round from the 20 yard line, but other methods may be employed. The team or individual with the highest score after the tie-breaker shall be given the tie. If still tied, the shoot-off will be continued with a 10 target round from the 27 yard line. If still tied, the shoot off will continue in a "miss and out" manner. The shot selection will be up to the shoot management.

.22 Rifle Rules

.22 Rifle General Rules

1. Inspection: There will be an inspection/weigh-in station. It is the responsibility of each participant and their coaches to ensure the rifles they will be using during the competition meet the rules listed in the State Contest Rulebook. Any rifles found not meeting the listed specifications will have a chance to be fixed, if unable to be adjusted in a timely manner that firearm will be disqualified and participant will need to use another firearm.
2. Firing Line: No portion of the participant's body may rest upon or touch the ground in advance of the firing line. First point of contact with the ground must be no more than six (6) inches behind the firing line.
3. Clear Bore Indicators (C.B.I.'s): All participants will use C.B.I.'s that are required to extend a minimum of three (3) inches past the muzzle and the action when not firing. CBI colors will be orange, yellow, green, or red.
4. Eye Protection: All participants and other personnel in the immediate vicinity of the ranges are to wear eye protection.
5. Ear Protection: All participants and other personnel in the immediate vicinity of the ranges are to wear hearing protection.
6. Spotting Scopes: Spotting scopes or binoculars will be allowed throughout the match. Spotting Scope bases may be ahead of the firing line, however, the eyepiece of the spotting scope must remain behind the firing line.
7. Sight Definitions: Open: A combination of an open notch (rear) and blade or post (front) sight. A factory installed hood on the front sight will be allowed. No lenses. Aperture: Must have a rear peep and front aperture. Interchangeable aperture inserts are allowed. No lenses.
8. Kneeling Rolls: Kneeling rolls are to be used in the kneeling position only. They are to be made of a pliable material not to exceed seven (7) inches in diameter by nine and one-half (9-1/2) inches in length.
9. Artificial Shooting Rests & Supports: shooting stands may be used to support the firearm when at rest only and not during the shooting sequence. Shooting stands may be placed ahead of the firing line. No other type of supports will be allowed. Youth may not shoot directly over the shooting stand, it must be placed to the side. **Off hand stands are not allowed for support of the rifle during silhouettes but are allowed to hold ammunition.**
10. Shooting Mats: Shooting mats are not to exceed one (1) inch in thickness, in addition to ground cover provided. Youth are to provide their own shooting mats.
11. Coaching: Coaching is permitted during the sight-in period only. The coach may assist the participant during this time by calling the shots, checking time, checking score, ordering sight changes, etc., but may not physically assist the participant in loading, cocking, adjusting positions or making sight corrections. The coach must control their voice and actions as not to disturb other participants. A participant may have no more than one (1) coach on the line during the sight-in period. Coaching will not be allowed from the spectator area.
12. Magazines: Extended capacity magazines protruding more than on (1) inch below the firearm are prohibited. Protruding magazines may not be used as a support.
13. Action Open: Unless cased, all actions are to remain open. a. No participant will aim toward the targets until the proper command is given. b. No firearm will be handled in any manner to violate any safety rule.
14. Cased Firearms: Firearms are to remain cased until reaching the designated staging area or firing line.
15. Firearms Unloaded: The firearm may not be loaded until the participant has taken position at his or her firing point, firearm pointed toward the target and the command has been given. Participant can only load (5) rounds in a magazine at a time.
16. Cease Fire: All participants will stop and repeat the command. Loaded firearms will remain pointed down range upon the command "Cease Fire." Actions will remain open and chambers up.
17. Discipline: The safety of participants, range personnel and spectators requires all to give continuous attention to careful handling of firearms and caution while moving about the range.

18. Delaying a Match: No participant may delay the start of the match through tardiness in reporting or undue delay in preparing to fire.

Equipment

1. Any firearm built or modified to give the distinct impression of a modern military style firearm such as an AR or AK is not allowed in the 4-H Shooting Sports Program. Listed below are visual examples of, but not limited to, firearms that resemble those not allowed. Examples of unacceptable firearm components include: any type of muzzle devices (muzzle brake, recoil compensator, suppressors, porting), front pistol grips, heat shield/shroud, and magazines extending more than 1 inch below the receiver. Ported barrels are permitted on shotguns & pistols.
2. Suppressors are not permitted.
3. Ammunition: Ammunition that is commercially manufactured, solid point, standard, high or target velocity, cataloged as .22 short, long or long rifle ammunition is required. No .22 magnum caliber allowed. No hollow point, hyper velocity (1,400 fps+), incendiary or tracer ammunition will be permitted.
4. Sights, optics or shooting aids that project any type of light, image or laser down range are prohibited.

Scoring

1. Excessive shots on a target – i.e. - 11 shots on a 10 bull target: From the back side of the target count total number of holes. If the total number of holes is more than the course of fire dictates, the participant will lose the highest scoring shot of the target for each excessive shot on the target.
2. Cross Fires: Defined as one participant's shot to another participant's target. All crossfires must be reported to the line official immediately, before the allotted relay time expires. The line official must sign off on all cross fires or they will be scored as excessive shots.
3. Participants are to verify and sign their score card to acknowledge and agree upon their recorded scores. All score cards must be signed by the scorer and participant. Unsigned scorecards will not be tabulated. Once participant has signed the scorecard, office staff will verify the scores. If the score is too high, office staff will adjust the score accordingly. If the score is too low, office staff will verify but the low score that the participant signed off on will stand.
4. Participants will have a 15 minute period immediately after the end of the contest to examine targets and protest any scores. Plugged shots may not be re-plugged and will be indicated by a p(+or-) and scorer's initials. Parents, coaches, spectators are NOT allowed to assist in this process.

NRA THREE-POSITION

| | |
|------------------------|--|
| Target: | A-51 (50 yards) |
| Course of Fire: | 10 shots in each position – prone, standing and kneeling/sitting in that order at 50 yards. 30 record shots. |
| Time Limit: | One (1) minute per record shot in each position. |
| Equipment: | <p>Any .22 caliber rimfire rifle chambered for .22 short, .22 long, or .22 long rifle cartridge may be used in smallbore 3-position; no restriction on barrel length, overall weight of rifle or accessories or overall weight of rifle and accessories other than those laid out in NRA Smallbore Three-Position Rifle Rules.</p> <p>Clothing: Gloves - Gloves may be worn which do not form an artificial support. Shooting Coats - Are permitted in all events. They may be constructed of cloth, canvas, nylon, leather or any combination of these materials. They may be lined or unlined. The lining may be smooth or quilted. There may be elbow pads, a shoulder pad and a sling pad made of non-slip material. Shooting Trousers - Are permitted in all events. They may be constructed of cloth, canvas, nylon, leather or any combination of these materials. They may be lined or unlined. The lining may be smooth or quilted. There may be knee and seat reinforcements that may be made of a non-slip material.</p> |
| Sights: | Metallic or peep sights only. |
| Ammunition: | Solid point (40 grains) ammunition |
| Rule Book: | NRA Smallbore Rifle Rules (Revised January 2020) nra-smallbore-rifle-rules.pdf |

CMP SPORTER RIFLE MATCH

CMP Rimfire Sporter Rule R 1.0 - Intent and Spirit of Sporter Rules. The intent of CMP Rimfire Sporter rules is to promote target competitions with .22 caliber rimfire rifles that are restricted to low-cost, readily available, sporter-type rifles typically used in informal target shooting, plinking or small game hunting. Any rifle configuration or item of equipment not mentioned in these rules or that is contrary to the intent and spirit of these rules is prohibited.

Note: In Rapid Fire stages: after the “Load” command, all actions must be locked open prior to the “Start” command. Manually holding the action open is not permitted. **Actions may not be unlocked or closed when the participant is in the firing position and the firearm safely pointed down range when the “Start” command is given.**

| | |
|------------------------|---------------------------------|
| Target: | B-19 CMP Rimfire Sporter Target |
| Distance: | 25 yards and 50 yards |
| Course of Fire: | 30 shots for record |

50 yards

Prone position - 5 shots, Slow fire & 5 shots, rapid fire

Sitting or Kneeling – 5 shots slow fire & 5 shots rapid fire

25 yards

Standing – 5 shots slow fire & 5 shots rapid fire

Time Limit:

Slow fire- 1 shot per minute;

Rapid fire- 5-shot strings in **25 seconds** (semi-auto) or **30 seconds** for manual repeater.

Equipment:

Rifle: Overall weight of the rifle may not exceed 7.5 lbs., with sights. If sling is used; it may be removed when rifle is weighed. Any type of action, semi-automatic or manually operated with a trigger pull of at least 3.0 lbs.

Stock: Must have standard sporter stock constructed of wood or synthetic material. Thumbhole stocks, adjustable butt plates or cheekpieces, and rails or adjustable (moveable) sling swivels are **not** permitted.

Sling: Standard leather or web sling no wider than 1 1/4 inches may be used in the prone, sitting or kneeling positions. Must be fixed in at least one position. (rails with adjustable sling swivels are not permitted).

Sights: Open sights may be used; receiver sights or a scope not exceeding 6x magnification is permitted; the magnification adjustment device on variable telescopes that has a maximum magnification over 6X must be secured with tape or other similar means so that it cannot be changed during firing.

Barrel: In accordance with the intent of this event – Sporter rifle barrels only. Barrels of special composition (carbon) or non-factory styles (i.e. fluted) are not permitted.

Clothing: A participant is permitted to wear a maximum of two sweatshirts. Shooting jackets, leather shooting vests, shooting boots, etc. are not allowed. Participants may wear a standard leather, cloth, or synthetic work glove provided that it is not padded. Ordinary low-cut shoes, work boots, or hunting-style boots may be worn.

Rule Book:

CMP Games, Rifle and Pistol Competition Rules, 9th Edition - 2022

[0-2022 Highpower Rifle Rules_v5_ForPrinter \(thecmp.org\)](https://thecmp.org/0-2022-Highpower-Rifle-Rules_v5_ForPrinter)

SMALLBORE HUNTING SILHOUETTE RIFLE

Target:

1/5 scale black silhouettes on paper

Course of Fire:

All shooting in strings of 5 shots. Two strings of 5 shots before scoring

Silhouette

Yards

Chicken 25

Pig 50

Turkey 75

Ram 100

40 record shots.

Time Limit: 2 ½ minutes firing time per bank of 5 targets

Equipment: NRA Smallbore silhouette rifle rules (rule 3.2) are identical to the High Power Silhouette Rifle (rule 3.1), except for ammunition. A synopsis follows: maximum weight – 10 pounds 2 ounces including sights. Any sights, telescopic or metallic, any safe trigger, stocks must be traditionally styled, conventional configurations such as factory rifle stocks or silhouette stocks as manufactured by Fajen, McMillan, H-S Precision and others and barrel: no longer than 30 inches. Shooting stands will not be allowed in the silhouette event. Tables will be provided to support equipment.

Note:

- Chassis type firearms will be allowed but must meet weight limits and magazines may not be used as a palm rest.
- No muzzle devices, barrel porting of any type or flash suppressors will be allowed.
- Any stocks with movable parts must be secured in one position. Combs/cheekpiece may not be above the centerline of the bore.
- Magazines may not be used as a palm rest.
- No muzzle devices, barrel porting of any type or flash suppressors will be allowed. 3/31/2022 27
- Any stocks with movable parts must be secured in one position. Combs/cheekpiece may not be above the centerline of the bore.

Clothing: clothing normally suitable for existing climatic temperatures. Shooting coats, unnecessarily heavy clothing, or anything on the person that would provide artificial support such as clothing having excess padding or stiffening material or which restricts or supports the body in the shooting position may not be worn. Any dispute regarding clothing will be submitted to the event management for decision. Gloves may not be worn except when required for warmth. Conditions permitting the use of gloves will be determined by the event management. Padded or unnecessarily heavy gloves may not be worn.

Shooting Position: The standard standing position used in position shooting is permitted.

Scoring: Shot must touch the line of the paper black figure. Metallic silhouettes must be knocked completely off stand or in a non-vertical position to be scored as a “hit”.

Rule Book: NRA Rifle Silhouette Rules (January 2020 Edition)
[nra-silhouette-rifle-rulebook.pdf](#)

.22 Pistol Rules

General Rules

1. Members must have written permission from parent or legal guardian to participate in this project in compliance with the Gun Control Act of 1968 and the Youth Handgun Safety Act of 1994. The Youth Safety Handgun Act, as included in the Gun Control Act of 1968, puts restrictions on the use and possession of handguns by youth under 18 years of age. Youth participating in Oklahoma State 4-H Shooting Sports must, at all times, follow all provisions of this act. Therefore, event officials will require “the prior written consent of the juvenile’s parent or guardian who is not prohibited by Federal, State, or local law from possessing a firearm.” This written permission must be in possession of the youth – even if a parent/guardian is present. Please see the document below on **page 28-29**. This document must be available upon request at check-in.
2. Clear Bore Indicators (C.B.I.’s): All participants will use C.B.I.’s that are required to extend a minimum of three (3) inches past the muzzle and the action when not firing. CBI colors will be orange, yellow, green, or red.
3. Ammunition: Ammunition that is commercially manufactured, solid point, standard, high or target velocity, cataloged as .22 short, long or long rifle ammunition is required. No .22 magnum caliber allowed. No hollow point, hyper velocity (1,400 fps +), incendiary or tracer ammunition will be permitted.
4. Cased pistols will be the last equipment to be brought to the range and the first to be removed from it. Cased Firearms: Firearms are to remain cased until given the command to uncage the firearm.
5. All are “single pistol” matches, meaning participants are to shoot the entire course of fire, with the same pistol. No pistol changes will be allowed between stages, and only one pistol per participant is allowed on the line. Pistols may be replaced only if they are disabled or malfunctioning.
6. .22 Pistol Events: There will be an inspection/weigh-in station. It is the responsibility of each participant and their coaches to ensure the pistols they will be using during the competition meet the rules listed in the State Contest Rulebook. Any pistols found not meeting the listed specifications will have a chance to be fixed, if unable to be adjusted in a timely manner that firearm will be disqualified and participant will need to use another firearm.
7. Action Open: Unless cased, all actions are to remain open.
8. No participant will aim toward the targets until the proper command is given.
9. No pistol will be handled in any manner to violate any safety rule.
10. Firearms Unloaded: The firearm may not be loaded until the participant has taken position at his or her firing point, firearm pointed toward the target and the command has been given. Participant can only load (5) rounds in a magazine at a time.
11. Cease Fire: All participants will stop and repeat the command. Loaded firearms will remain pointed down range upon the command “Cease Fire.” Actions will remain open and chambers up.
12. Discipline: The safety of participants, range personnel and spectators requires all to give continuous attention to careful handling of firearms and caution while moving about the range.
13. Delaying a Match: No participant may delay the start of the match through tardiness in reporting or undue delay in preparing to fire.
14. Excessive shots on a target – i.e. - 11 shots on a 10 bull target: From the back side of the target count total number of holes. If the total number of holes is more than the course of fire dictates, the participant will lose the highest scoring shot of the target for each excessive shot on the target.

Youth Handgun Safety Act Member Cards (Front)



I am an enrolled member in a
4-H Shooting Sports Program.
I participate in a 4-H course of instruction
in the safe and lawful use of firearms.



I am an enrolled member in a
4-H Shooting Sports Program.
I participate in a 4-H course of instruction
in the safe and lawful use of firearms.



I am an enrolled member in a
4-H Shooting Sports Program.
I participate in a 4-H course of instruction
in the safe and lawful use of firearms.



I am an enrolled member in a
4-H Shooting Sports Program.
I participate in a 4-H course of instruction
in the safe and lawful use of firearms.



I am an enrolled member in a
4-H Shooting Sports Program.
I participate in a 4-H course of instruction
in the safe and lawful use of firearms.



I am an enrolled member in a
4-H Shooting Sports Program.
I participate in a 4-H course of instruction
in the safe and lawful use of firearms.



I am an enrolled member in a
4-H Shooting Sports Program.
I participate in a 4-H course of instruction
in the safe and lawful use of firearms.



I am an enrolled member in a
4-H Shooting Sports Program.
I participate in a 4-H course of instruction
in the safe and lawful use of firearms.

Youth Handgun Safety Act Member Cards (Back)

| | |
|---|---|
| <p>In accordance with the Youth Handgun Safety Act, I grant permission for my child to transport, handle, and discharge firearms in a 4-H Shooting Sports Program course of instruction in the safe and lawful use of firearms.</p> <p>_____</p> <p>Parent/Guardian Signature</p> | <p>In accordance with the Youth Handgun Safety Act, I grant permission for my child to transport, handle, and discharge firearms in a 4-H Shooting Sports Program course of instruction in the safe and lawful use of firearms.</p> <p>_____</p> <p>Parent/Guardian Signature</p> |
| <p>In accordance with the Youth Handgun Safety Act, I grant permission for my child to transport, handle, and discharge firearms in a 4-H Shooting Sports Program course of instruction in the safe and lawful use of firearms.</p> <p>_____</p> <p>Parent/Guardian Signature</p> | <p>In accordance with the Youth Handgun Safety Act, I grant permission for my child to transport, handle, and discharge firearms in a 4-H Shooting Sports Program course of instruction in the safe and lawful use of firearms.</p> <p>_____</p> <p>Parent/Guardian Signature</p> |
| <p>In accordance with the Youth Handgun Safety Act, I grant permission for my child to transport, handle, and discharge firearms in a 4-H Shooting Sports Program course of instruction in the safe and lawful use of firearms.</p> <p>_____</p> <p>Parent/Guardian Signature</p> | <p>In accordance with the Youth Handgun Safety Act, I grant permission for my child to transport, handle, and discharge firearms in a 4-H Shooting Sports Program course of instruction in the safe and lawful use of firearms.</p> <p>_____</p> <p>Parent/Guardian Signature</p> |
| <p>In accordance with the Youth Handgun Safety Act, I grant permission for my child to transport, handle, and discharge firearms in a 4-H Shooting Sports Program course of instruction in the safe and lawful use of firearms.</p> <p>_____</p> <p>Parent/Guardian Signature</p> | <p>In accordance with the Youth Handgun Safety Act, I grant permission for my child to transport, handle, and discharge firearms in a 4-H Shooting Sports Program course of instruction in the safe and lawful use of firearms.</p> <p>_____</p> <p>Parent/Guardian Signature</p> |

SLOW-FIRE BULLSEYE – single stage

- Target:** NRA B-8
- Distance:** 25 yards
- Course of Fire:** All slow-fire, 30 record shots at 25 yards
- Time Limit:** 10 minutes for 2 five shot strings.
- Shooting Position:** One hand standing
- Equipment:** **Rule 3.4** .22 Caliber Pistol or Revolver – Any pistol (single shot or semi-automatic) or revolver using a .22 caliber rim-fire.
- Barrel length, including cylinder, not more than 10 inches.
 - Trigger pull not less than 2 pounds.
 - Any sights, including telescopic, are permitted with the exception of those sights that project an image on the target. Open sights may be adjustable but not over 10 inches sight radius. Any sighting device programmed to activate the firing mechanism is prohibited.
- Ammunition:** Solid point, 40 grains .22 Long Rifle
- Rule book:** NRA Precision Pistol Rules (January 2020 Edition)
<http://rulebooks.nra.org/documents/pdf/compete/RuleBooks/Pistol/pistol-book.pdf>

CAMP PERRY ROUND (modified)

- Target:** NRA B-8
- Distance:** 25 yards
- Course of Fire:** 15-timed fire and 15-rapid fire. (30 record shots)
- Time Limits:** Timed fire: 20 seconds per 5 shot string
Rapid fire: 10 seconds per 5 shot string
- Shooting Positions:** One handed, standing.
- Equipment:** Rule 3.1.3 Standard Smallbore Pistol .22 caliber rim fire – The pistol may be any .22 rimfire pistol, either semi-automatic or revolver. The pistol may have orthopedic or specially shaped grips. Sights are restricted to open sights (service pistol rules) with adjustable rear sights. The pistol must have a trigger pull of at least two (2) pounds.
- Service pistol (and therefore a qualifying pistol for this event) has “Open sights only with a non-adjustable front sight. The rear sight may be adjustable and must have an open “u” or rectangular notch. [NRA Conventional Pistol - General Service Pistol Specifications 3.1 A (3)]

Ammunition: Solid point, 40 grains .22 Long Rifle

Rule Book: NRA Precision Pistol Rules (January 2020 Edition)
<http://rulebooks.nra.org/documents/pdf/compete/RuleBooks/Pistol/pistol-book.pdf>

.22 HUNTER PISTOL SILHOUETTE

Target: Paper targets of determined size

Course of Fire: Shooting in strings of 5 shots. Shooting two strings of 5 shots before scoring.

Target Size: ½ Scale Hunter Pistol Silhouette paper targets

| <u>Silhouette</u> | <u>Yards</u> |
|--------------------------|---------------------|
| Chicken | 25 |
| Pig | 50 |
| Turkey | 75 |
| Ram | 100 |

40 record shots.

Time Limit: 2 minute firing time for each bank of 5 targets.

Equipment: Any factory available smallbore pistol weighing no more than 5.0 pounds, operated with a trigger pull of at least 2.0 lbs., chambered for the .22 rimfire Long Rifle cartridge and having a factory standard barrel length of no more than 12 inches measured from breech face to muzzle equipped with any sights that do not project an image on the target. (NRA Pistol Silhouette Rule 3.1 and 3.2) **No bolt action pistols, including cannon bolt, turn bolt or straight bolt will be permitted.**

Ammunition: Solid point, 40 grains .22 Long Rifle

Shooting Position: Only standing positions may be used, two hand holds permitted but the hands and arms must be free of the body and may not touch beyond the wrist (NRA Rule 5.8)

Scoring: Shot must touch the line of the paper black figure. Metallic silhouettes must be knocked completely off stand to be scored as a “hit”.

Rule book: NRA Pistol Silhouette Rules (January 2020 Edition)
<https://competitions.nra.org/media/7824/nra-silhouette-pistol-rulebook.pdf>

Muzzleloader Rules

1. All rifles will be inspected. During inspection we will run a patch down the barrel. If it comes out extremely dirty, the participant has the option to clean the rifle and present it for re-inspection before the relay starts. Or they may choose to have the rifle disqualified.
2. Time: 10 minutes sight in, 40 minutes record shots. All shots must be discharged before time expires.
3. Shooting Position: All targets will be shot at in the off-hand (Standing) position
4. All hang-fires or dry balls must be reported to the line official immediately, but without leaving the firing line. Rifles must remain pointed in a safe direction. While on the range, the safe direction is down range.
5. Blowing down the barrel of the firearm is PROHIBITED.
6. Swabbing with a damp and dry patch between rounds is highly recommended.
7. Coaching: Coaches may not be on the firing line during the record relay. No coaching will be allowed during the record relay.
8. Discipline: The safety of participants, range personnel and spectators requires all to give continuous attention to careful handling of firearms and caution while moving about the range.
9. Delaying a Match: No participant may delay the start of the match through tardiness in reporting or undue delay in preparing to fire.
10. Safe Trigger: Any safe trigger (single or double set) is allowed. A safe trigger is one which does not allow the hammer to fall except by a deliberate pull of the trigger by the participant. Electronic ignition systems are not allowed for any muzzleloading event.
11. Any firearm built or modified to give the distinct impression of a modern military style firearm such as an AR or AK is not allowed in the 4-H Shooting Sports Program. Listed below are visual examples of, but not limited to, firearms that resemble those not allowed. Examples of unacceptable firearm components include: any type of muzzle devices (muzzle brake, recoil compensator, suppressors, porting), front pistol grips, heat shield/shroud, and magazines extending more than 1 inch below the receiver. Ported barrels are permitted on shotguns & pistols.
12. Suppressors are not permitted.
13. Excessive shots on a target – i.e. - 11 shots on a 10 bull target: From the back side of the target count total number of holes. If the total number of holes is more than the course of fire dictates, the participant will lose the highest scoring shot of the target for each excessive shot on the target.
14. All events are restricted to patched soft lead rounds balls only.
15. No open powder containers are permitted on the firing line except when powder is actually being measured. All powder container must be properly labeled for granular size. Any open container will become the property of the Range Officer.
16. A separate powder measurer must be used to carry the powder from the powder flask to the muzzle of the gun. No pre-measured black powder in glass or plastic containers allowed.
17. No rifle may be capped or primed until on the firing line and the command to fire has been given by the Range Officer.
18. No glass containers allowed on the range including the loading table and firing line.
19. Muzzleloaders must be loaded in the designated area announced by the Chief Range Officer.
20. All participants must take part in the Opening Volley to demonstrate rifle is operating properly.

NMLRA Muzzle Loading Rifle, Pistol and Shotgun—except as noted (January 2020 Edition).

<https://www.nmlra.org/rules>

50 YARD BULLSEYE

Target: NMLRA 100 yard 8 ring targets (TG2406)

Distance: 50 yards

Course of Fire: 10 shots standing.

Time Limit: 40 minutes total running time.
Will be run in 2 series of 5 shots – 20 minutes/series.

Projectile: Patched soft lead round ball only.

Scoring: Highest scoring area touched by ball. (Note: The latter is less stringent than standard NMLRA scoring). Participant's round ball will be used for "plugging" shots.

25 YARD NOVELTY – Bottles and Haffner Critters combo

Target: NMLRA Bottle Target (TG2427), and NMLRA Haffner Combination Target (TG901)

Distance: 25 yards

Course of Fire: 5 record shots on each target, (10 record shots)

Time Limit: 40 minutes total running time.
Will be run in 2 series of 5 shots- 20 minutes/series.

Projectile: Patched soft lead round ball only.

Scoring: Bottles: as outlined on the target.
Completely within neck-10 pts; nicking the neck-7 pts; within body-5 pts; nicking the body -3 pts. Top bottle for practice. One shot at each of the lower five bottles for score
Haffner: highest scoring area touched by ball. (Note: The latter is less stringent than standard NMLRA scoring.)

MUZZLELOADING RIFLE SILHOUETTE

This is a 4-H 'hybrid' event that fits neither NRA Black Powder Silhouette nor NMLRA Silhouette.

Target: ½ Scale Hunter Pistol Silhouette paper targets

Distance: 25 yard - ½ scale chickens
50 yard - ½ scale pigs

75 yard - ½ scale turkeys

100 yard - ½ scale rams

Course of Fire: 3 shots per target at each distance

Time Limit: 12 minutes per bank of 3 shots per target.

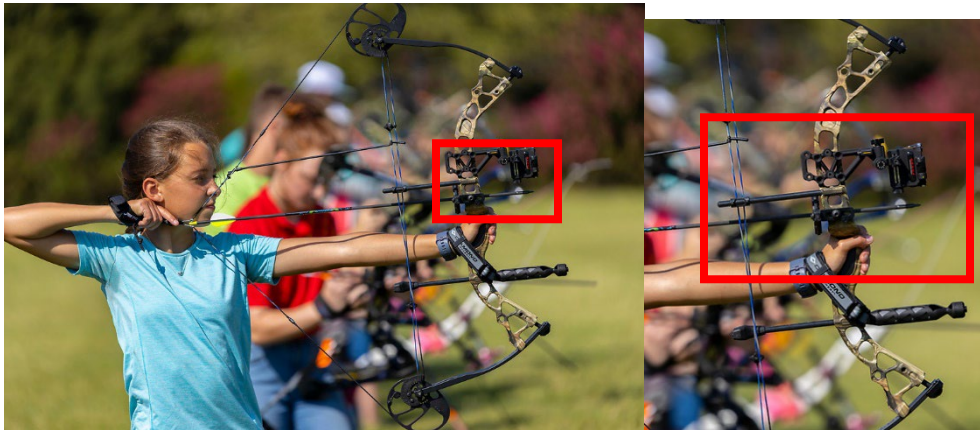
Projectile: Patched soft lead round ball only.

Scoring: Targets outline must be touched or broken in order to count as hits. Participant's round ball will be used for "plugging" shots.

Outdoor Archery

General Rules

1. Only the Chief Range Officer(s) or their Assistant(s) are allowed to remove someone from the line or prevent a participant from going to the line.
2. Draw: A minimum of the arrow tip must extend beyond the riser of the bow at full draw (see photo). The tip of the arrow is defined as the entire portion of the arrow point that is inserted, threaded in, glued or affixed into or outside the arrow shaft. All bows must be hand-held at full draw. (Any devices used to aid the participant must allow for the rule that the arrow tip must extend beyond the riser of the bow at full draw). "Sky Draws" (drawing the arrow back while the arrow is at an unsafe angle above the target range) will not be allowed and can be cause for removal from the line and disqualification of scores.



3. Poundage: Maximum draw weight for any bow is sixty (60) pounds. A portable poundage device will be used to check bows. Bow poundage checks will be conducted prior to the participants beginning the contest. Adjustments to bow poundage may not be made after the bow poundage has been verified by range officials. Random bow poundage checks of squaddied groups will be conducted after participants start the contest. Participants with bows found to be over sixty (60) pounds draw weight will be disqualified.
4. Quivers: All arrows must be in a quiver or arrow case at all times. This includes all persons attending the State competition – youth, coaches, parents, leaders or other adults. Quivers must be properly worn, not carried by participants. No ground or pocket quivers allowed. Quivers attached to bow are also not allowed.
5. Binoculars: Binoculars will be allowed for participant and spectator use on the archery ranges. Random binocular checks of squaddied groups will be conducted after participants start the contest. Participants may not glass targets from the firing line. In consideration of time limitations per station, participants will move through their courses of fire expeditiously to avoid delays.

Range finders: Absolutely NO range finders or modified range finding equipment (mechanical or electronic) of any kind are allowed on any archery ranges. This applies to both participants and spectators and includes binoculars equipped with range finders. If a participant is found with a rangefinder on the range, they will be disqualified immediately. If a spectator is found with a rangefinder on the range, they will be required to leave the premises.
6. Arrows: No fiberglass arrows. Wood arrows are discouraged at the state contest, but may be used with Recurve / longbows with the approval of the contest superintendent prior to the start of the contest.
7. Arrow Retrieval: Whenever anyone is beyond the target backers an arrow must be placed in the top of the target backer (straight up) or a safety flag displayed vertically signifying that someone is behind the target backer.
8. Bows that fail safety inspection will not be allowed on the range.
9. All arrows must remain in the target butt until all arrows are scored. An arrow touching the line will be scored at the higher point value. They may then be withdrawn.
10. Arrows touched before they are scored will count as a zero.

11. If an appeal is made regarding scoring or other issue, the scorekeepers and range officers will meet and the Chief Range officer's call will be final
12. Off-ground skids or glances off of or into the target shall not be scored.
13. Bounce Out & Pass through Arrows: Bounce Out Arrow – An arrow that has impacted the scoring area of the target and failed to remain in the target and fallen to the ground in front of the target. Pass Through Arrow – An arrow that has impacted the scoring area of the target and passed completely through the target. FITA – Witnessed and confirmed bounce out and pass through arrows believed to have hit the target in the scoring area must be reported by the participant to the line official prior to the participant shooting their next arrow. Witnessed and confirmed bounce out and pass through arrows will be scored by the line official via the identified impact point on the target face left by the bounce out or pass through arrow. 3-D – Witnessed and confirmed bounce out and pass through arrows believed to have hit the target in the scoring area must be reported to the line official by the participant prior to the participant shooting their next arrow. If it is determined by the line official that the pass through arrow is not a result of the target condition, bounce out or pass through arrows will be scored by the line official as five (5) points. If it is determined by the line official that the bounce out or pass through arrow was a result of target condition, the participant may re-shoot a single arrow in place of the bounce out or pass through arrow.
14. An arrow embedded in the nock of another arrow (generally known as a robin hood) will be scored the same as the arrow skewered.
15. A dropped arrow is one which falls while being transferred from the quiver in preparation for a shoot or falls from the string during a controlled letdown. (A dropped arrow may be reshot).
16. The assigned target holder must report all cross fires to the line official immediately, before the allotted relay time expires.
17. Excessive shots on a target – i.e. - 11 shots on a 10 bull target: From the back side of the target count total number of holes. If the total number of holes is more than the course of fire dictates, the participant will lose the highest scoring shot of the target for each excessive shot on the target.

Whistle Signals are as follows:

Two whistle blasts: Participants to the line/Participants will straddle the line

One whistle blast: Commence firing

Three whistle blasts: Score and retrieve arrows

Four or more whistle blasts: Cease Fire Immediately

Equipment Malfunctions:

Equipment malfunctions must be addressed at the time of the incident. It is the participant's responsibility to notify the range officer of the malfunction. In the event of an equipment malfunction, the participant is to step back from the shooting line and raise their hand. A line official will come to assist. The participant will have a maximum of 15 minutes for repair time. The participant shall be allowed to shoot remaining arrows left in the end that occurred during the 15 minutes of repair time. If the participant is unable to return to the firing line after the 15 minute repair time has expired they will turn in their scorecard and not complete the remaining course of fire. Participants must return to the firing line at their assigned start time for the second course of fire in order to continue in the contest. One practice end will be allowed if malfunction deems necessary. This is a one-time option. All make-up arrows will be shot at the end of the round or at the officials' discretion. There will be no allowance for equipment failure given for arrows shot before or after said malfunction (arrows shot are arrows scored).

| <u>Class</u> | <u>Distance</u> | <u># of shots</u> |
|---------------------------|--|--|
| Senior (14+) | FITA <u>60-50-40-30</u> meters Field Round 3-D | 2 ends of 6 (48 arrows) 14 targets/2 arrows per target 15 targets/1 arrow per target |
| Intermediate (ages 12-13) | FITA <u>40-30-20</u> yards Field Round 3-D | 2 ends of 6 (36 arrows) 10 targets/2 arrows per target 10 targets/1 arrow per target |
| Junior (ages 9**-11) | FITA <u>25-20-15</u> yards Field Round 3-D | 1 end of 6 (18 arrows) 10 targets/2 arrows per target 10 targets/1 arrow per target |

Equipment Standards: (sights and magnifiers)

There will be **THREE** separate divisions and they will compete in their respective discipline for awards.

Compound Division (All Age Divisions)

- Any bow that **uses pullies or cams** is deemed a compound.
- Release aids, string peeps, optical sights and spirit levels are permitted.
- Magnified sights are permitted but **NO** rangefinding sights or sights that produce an image on the target are permitted.
- 60 lb. maximum draw weight.

Recurve/Long Bow Division (All Age Divisions)

- One adjustable sight pin or multiple hunting style sight pins may be used; clicker and kisser buttons permitted; Participants may have as many sight pins as deemed necessary; Torque compensators are permitted.
- String peeps and mechanical release aids **are not** permitted
- 60 lb. maximum draw weight.

Genesis Division (All Age Divisions)

- Bare Bow with no modifications or alterations including adding anything to the bow.
- Mechanical release aids and wisker biscuits **are not** permitted
- Finger tabs and archery gloves are permitted

Arrows:

- Arrows must meet AMO minimum weight standard.
- 5 grains arrow weight per pound bow peak draw weight will be minimum arrow weight.
- Examples
 - If your bow has a 60 lb. draw using a 5 grain arrow weight then your arrow cannot weigh less than 300 grains
- No arrows larger than **27/64ths** in diameter are permitted.
- Bow draw weight and arrow weight will be checked by scales before the event.
- **Genesis arrows must be used in Genesis Division and arrows must be full length.**
- Even though the 3 governing bodies for the 3 events have slightly different requirements or restrictions-for the sake of simplification- this 4-H match will use one standard for equipment for all events.

All decisions made by official judge(s) for the event decision will be final.

FITA ROUND

| | |
|------------------------|---|
| Target: | Seniors: 122 cm and 80 cm faces, 5-color face Intermediates: 122 cm face, 5-color face Juniors: 122 cm face, 5-color face |
| Distance: | Seniors: 60, 50, 40, and 30 meters Intermediates: 40, 30, 20 yards Juniors: 25, 20, 15 yards |
| Course of Fire: | Seniors: 2 ends of 6 arrows each from 60 and 50 meters @ 122 cm targets (equal to 66 yards and 55 yards) 2 ends of 6 arrows each from 40 and 30 meters @ 80 cm targets (equal to 44 yards and 33 yards) Intermediates: 2 ends of 6 arrows each from 40, 30 and 20 yards @ 122 cm targets Juniors: 1 end of 6 arrows each from 25, 20 and 15 yards @ 122 cm targets |
| Time Limit: | 3 ½ minutes per 6 arrow end |
| Scoring: | 10X-1 from the center outward, inner 10's will be scored as a 10X. Ties breaks will follow the NGB Rules. <u>Archers will score targets.</u> |
| Spotting Scopes | Spotting scopes can be used but they cannot interfere with other participants. |
| NGB Rules: | World Archery Federation / Target https://rulebook.worldarchery.sport/PDF/Official/2022-01-15/EN-Book3.pdf |

FIELD ROUND

| | |
|------------------------|---|
| Target: | Targets of sizes selected by the management and appropriate to the course |
| Distances: | Seniors: Marked distances within the range of 5 to 50 yards Intermediates: Marked distances within the range of 5 to 40 yards Juniors: Marked distances within the range of 5 to 25 yards |
| Course of Fire: | 14 targets, 2 arrows per target for Seniors. Juniors & Intermediates: 10 targets, 2 arrows per target |
| Targets: | NFH-4-20, NFH-35, NFH-50, NFH-65 |

| | |
|--------------------|--|
| Time Limit: | Participants will move through the course expeditiously and avoid delays. |
| Scoring: | 5X, 5, 4, 3 from the center outward. Tie breaks will follow the NGB Rules. |
| NGB Rules: | National Field Archery Association https://www.nfaausa.com/wp-content/uploads/2021-2023-CONSTITUTION-.pdf |

3-D ROUND

| | | | | | | | | | | | |
|------------------------|--|------------|---|------------|---------|------|--------|------|---------------------|-------------|---|
| Targets: | 3-D targets as selected and placed by the management. | | | | | | | | | | |
| Distances: | <p>Seniors: Unmarked distances from 5 to 50 yards.</p> <p>Intermediates: Unmarked distances from 5 to 40 yards</p> <p>Juniors: Unmarked distances from 5 to 25 yards</p> | | | | | | | | | | |
| Course of Fire: | <p>Seniors: 15 targets, one arrow per target</p> <p>Juniors & Intermediates: 10 targets, one arrow per target</p> | | | | | | | | | | |
| Time Limit: | Participants will move through the course expeditiously and avoid delays. Lost arrow search is limited to 2 minutes. | | | | | | | | | | |
| Scoring: | <table> <tr> <td>· +11 pts.</td><td>11 ring or “X” ring centered inside the 10 ring</td></tr> <tr> <td>· +10 pts.</td><td>10 ring</td></tr> <tr> <td>· +8</td><td>8 ring</td></tr> <tr> <td>· +5</td><td>Any other body shot</td></tr> <tr> <td>· M (for 0)</td><td>Misses, glancing shots, not touching body color (horns, rocks, logs, etc.) Hooves are considered body color</td></tr> </table> <p>Ties will be broken by the number of the highest number of 11’s, then 10’s, 8’s, etc</p> | · +11 pts. | 11 ring or “X” ring centered inside the 10 ring | · +10 pts. | 10 ring | · +8 | 8 ring | · +5 | Any other body shot | · M (for 0) | Misses, glancing shots, not touching body color (horns, rocks, logs, etc.) Hooves are considered body color |
| · +11 pts. | 11 ring or “X” ring centered inside the 10 ring | | | | | | | | | | |
| · +10 pts. | 10 ring | | | | | | | | | | |
| · +8 | 8 ring | | | | | | | | | | |
| · +5 | Any other body shot | | | | | | | | | | |
| · M (for 0) | Misses, glancing shots, not touching body color (horns, rocks, logs, etc.) Hooves are considered body color | | | | | | | | | | |
| Other: | In consideration of time, no participant may glass the target from the shooting stake after taking his or her shot. Participants may glass the target prior to shooting, but are reminded of the time restriction for their shot. No adjustment of sights will be allowed after an archer has drawn and letdown. No adjustment of sights will be allowed after an archer has glassed the target while at the shooting stake. No Range Finders are allowed on the course (3-D) for use by participants, coaches, other adults or other youth. | | | | | | | | | | |
| NGB Rules: | IBO – https://f.hubspotusercontent10.net/hubfs/2446169/2021%20IBO%20Rules.pdf | | | | | | | | | | |

Air Rifle

General Rules

1. Inspection: There will be an inspection/weigh-in station. It is the responsibility of each participant and their coaches to ensure the rifles they will be using during the competition meet the rules listed in the State Contest Rulebook. Any rifles found not meeting the listed specifications will have a chance to be fixed, if unable to be adjusted in a timely manner that firearm will be disqualified and participant will need to use another firearm.
2. Firing Line: No portion of the participant's body may rest upon or touch the ground in advance of the firing line or be more than six (6) inches behind the firing line.
3. Clear Bore Indicators (C.B.I.'s): All participants will use C.B.I.'s that are required to extend a minimum of three (3) inches past the muzzle and the action when not firing, they may be any color.
4. Eye Protection: All participants and other personnel in the immediate vicinity of the ranges are to wear eye protection.
5. Spotting Scopes: Spotting scopes or binoculars will be allowed throughout the match. Spotting Scope bases may be ahead of the firing line, however, the eyepiece of the spotting scope must remain behind the firing line.
6. Sight Definitions: Open: A combination of an open notch (rear) and blade or post (front) sight. A factory installed hood on the front sight will be allowed. No lenses. Aperture: Must have a rear peep and front aperture. Interchangeable aperture inserts are allowed. No lenses.
7. Kneeling Rolls: Kneeling rolls are to be used in the kneeling position only. They are to be made of a pliable material not to exceed seven (7) inches in diameter by nine and one-half (9-1/2) inches in length.
8. Artificial Shooting Rests & Supports: shooting stands may be used to support the firearm when at rest only and not during the shooting sequence. Shooting stands may be placed ahead of the firing line. No other type of supports will be allowed. Youth may not shoot directly over the shooting stand, it must be placed to the side. **Off hand stands are not allowed for support of the rifle during silhouettes but are allowed to hold ammunition.**
9. Shooting Mats: Shooting mats are not to exceed one (1) inch in thickness, in addition to ground cover provided. Youth are to provide their own shooting mats.
10. Coaching is permitted during the sight-in period only. The coach may assist the participant during this time by calling the shots, checking time, checking score, ordering sight changes, etc., but may not physically assist the participant in loading, *cocking, adjusting positions or making sight corrections. The coach must control their voice and actions as not to disturb other participants. A participant may have no more than one (1) coach on the line during the sight-in period. Coaching will not be allowed from the spectator area. After the sight-in period is over coaches must leave the line and are not allowed to talk to, hand signal, or communicate in any way with participants unless the participant requests a conference with their coach by raising their hand, asking the range officer, and explaining the purpose of the request, and the range officer approves. No extra time will be given if a participant requests a conference with their coach.
 - a. Pumping assistance - A Junior or Intermediate participant may have assistance with the cocking of the firearm with prior approval of the superintendent. Assistants cannot be the participant's own parent. Assistants are not allowed to communicate with the participant or other assistants. One warning will be given for communication. If communication persists, the assistant will be removed from the range and replaced with another assistant.
11. Action Open: Unless cased, all actions are to remain open. a. No participant will aim toward the targets until the proper command is given. b. No firearm will be handled in any manner to violate any safety rule.
12. Cased Firearms: Firearms are to remain cased until reaching the designated staging area or firing line.
13. Firearms Unloaded: The firearm may not be loaded until the participant has taken position at his or her firing point, firearm pointed toward the target and the command has been given.
14. Cease Fire: All participants will stop and repeat the command. Loaded firearms will remain pointed down range upon the command "Cease Fire." Actions will remain open and chambers up.

15. Discipline: The safety of participants, range personnel and spectators requires all to give continuous attention to careful handling of firearms and caution while moving about the range.
16. Delaying a Match: No participant may delay the start of the match through tardiness in reporting or undue delay in preparing to fire.

Equipment

1. Any firearm built or modified to give the distinct impression of a modern military style firearm such as an AR or AK is not allowed in the 4-H Shooting Sports Program. Listed below are visual examples of, but not limited to, firearms that resemble those not allowed. Examples of unacceptable firearm components include: any type of muzzle devices (muzzle brake, recoil compensator, suppressors, porting), front pistol grips, heat shield/shroud, and magazines extending more than 1 inch below the receiver. Ported barrels are permitted on shotguns & pistols.
2. .177 caliber lead pellet only. Wadcutter-type pellets only (flat head). No domed, sabot or pointed heads on pellets allowed.
3. No set or electric triggers allowed.
4. Thumb holes, palm rests, thumb rests, heel rests or spirit levels are not allowed. (Any exceptions to this rule will be noted in the specific class rules.)
5. Shoes are restricted to soft, low cut, athletic or street shoes that do not extend above the ankles. **No boots are permitted.**
6. A shooting glove may be worn in 3P and Standing but **NOT** Silhouettes
7. No shooting jackets are permitted. Up to two sweatshirts are allowed in 3P and Standing but only one sweatshirt in silhouettes. Tight fitting under-garments known as compression clothing is not allowed.

Scoring

1. Excessive shots on a target – i.e. - 11 shots on a 10 bull target: From the back side of the target count total number of holes. If the total number of holes is more than the course of fire dictates, the participant will lose the highest scoring shot of the target for each excessive shot on the target.
2. Cross Fires: Defined as one participant's shot to another participant's target. All cross fires must be reported to the line official immediately, before the allotted relay time expires. The line official must sign off on all cross fires or they will be scored as excessive shots.
3. Scoring will be completed via the ORION scoring system. Participants will post their targets but will not touch their targets after the course of fire, range safety officers will collect targets and turn them in.
4. Scoring will be decimal scores as to give a more accurate score and cut down on tie breakers. If scores are tied after the decimal system, number of highest 10s (10 xs) will be used, then 9s, and so on.
5. Participants will have a 15 minute period immediately after the end of the contest to examine targets and protest any scores. Parents, coaches, spectators are NOT allowed to assist in this process. Since ORION is being used, targets will not be plugged but may be re-scanned. At the conclusion of this process, Participants are to verify and sign stating they received and agree with their scores.
6. If ORION fails, targets will be scored by hand and will follow last year's scoring rules (event management will give instructions to youth in this scenario)

STANDARD THREE-POSITION SPORTER AIR RIFLE

| | |
|-----------------|--|
| Target: | NRA AR 5/10 |
| Target Height: | SENIORS: Height to middle of target: Prone – 19.75” Standing – 55” Kneeling – 31.50” |
| Distance: | 10 meters or 33 feet |
| Course of Fire: | 3 x 10. 10 shots each position: prone, standing, and kneeling in that order. (30 record shots) |
| Time Limit: | 1 minute per record shot. |
| Equipment: | <p>.177 caliber air rifles under 7.5 pounds; metallic peep sights are permitted. Trigger pull must be a minimum of 1.5 lbs.</p> <p>Approved Rifles/Air Rifles officially approved for Sporter Class air rifle competitions are the AirForce Air Guns Edge, Crosman CH2000 (CO2), Crosman CH2009 & CH2021 (CA)(CO2 or compressed air), Daisy M599, Daisy M853/753/953/853CM (pneumatic), Daisy 888/887 (CO2), Daisy XSV40 Valiant (compressed air), Air Arms T200 (compressed air, with non-adjustable cheek-piece and butt-plate) and the Champions Choice T200 (CZ 200T, compressed air, with adjustable cheek-piece and butt-plate). Daisy 887/888 rifles may have 2010 model replacement stocks.</p> <p>For Oklahoma 4-H State Contests: Any rifle not included in this list but complies with the requirements of the Sporter Air Rifle as stated in the National Standard Rules may be submitted for a decision prior to the competition and may be added to the list of approved rifles.</p> |
| Clothing: | Shoes are restricted to soft, low cut, athletic or street shoes that do not extend above the ankles. No boots are permitted. A shooting glove may be worn, but no shooting jackets are permitted. Up to two sweatshirts or clothing suitable for the prevailing weather are allowed. A pin or button may be used as a sling keeper in the prone or kneeling positions. Shooting shirts and 4-H shooting sports vests are permitted. |
| Rule book: | CMP 2020-2022 National Standard Three-position Air Rifle Rules, 13 th Ed. – August 2021 Update https://thecmp.org/youth/air/national-standard-three-position-air-rifle-rules/ |

SPORTER AIR RIFLE EVENT (STANDING)

| | |
|-----------------|--|
| Target: | NRA AR 5/10 |
| Target Height: | SENIORS – Middle of target at 55" |
| Distance: | 10 meters or 33 feet. |
| Course of Fire: | 30 shots standing. Will be shot in three rounds with 10 shots per target. 10 minutes allowed per target. |
| Time Limit: | 1 minute per record shot standing. |
| Equipment: | <p>177 caliber air rifles under 7.5 pounds with metallic peep sights are permitted. Trigger pull must be a minimum of 1.5 lbs.</p> <p>Approved Rifles/Air Rifles officially approved for Sporter Class air rifle competitions are the AirForce Air Guns Edge, Crosman CH2000 (CO2), Crosman CH2009 & CH2021 (CO2 or compressed air), Daisy M599, Daisy M853/753/953/853CM (pneumatic), Daisy 888/887 (CO2), Daisy XSV40 Valiant (compressed air), Air Arms T200 (compressed air, with non-adjustable cheek-piece and butt-plate) and the Champions Choice T200 (CZ 200T, compressed air, with adjustable cheek-piece and butt-plate). Daisy 887/888 rifles may have 2010 model replacement stocks.</p> <p>For Oklahoma 4-H State Contests: Any rifle not included in this list but complies with the requirements of the Sporter Air Rifle as stated in the National Standard Rules may be submitted to for a decision prior to the competition and may be added to the list of approved rifles.</p> |
| Clothing: | Shoes are restricted to soft, low cut, athletic or street shoes that do not extend above the ankles. No boots are permitted. A shooting glove may be worn, but no shooting jackets are permitted. Up to two sweatshirts or clothing suitable for prevailing weather are allowed. |
| Rule Book: | CMP 2020-2022 National Standard Three-position Air Rifle Rules, 13 th Ed. – August 2021 Update https://thecmp.org/youth/air/national-standard-three-position-air-rifle-rules/ |

SPORTER AIR RIFLE SILHOUETTE

| | |
|--------------------|---|
| Target: | Individuel Animal Figure Pages SENIORS – Middle of target at 55" |
| Course of Fire: | <u>10</u> chickens <u>10</u> pigs <u>10</u> turkeys <u>10</u> rams Banks of 5 targets and shooting from left to right on each bank of targets. One target of ten silhouettes figures will be posted per participant. |
| Distance: | 10 meters or 33 feet |
| Time Limit: | 30 second ready time and 2 ½ minutes firing time for each bank or page of 5 targets. |
| Equipment: | Rifles that qualified for the 3-P and Standing events WILL be used for Silhouettes. Rifles will not weigh more than 11 lbs. with scope. No restrictions on the power of the scopes. Optical devices cannot project a beam on silhouettes. Butte plates maybe adjusted. State 4-H Match rules restrict this event to .177 caliber only. |
| Clothing: | Shoes are restricted to soft, low cut, athletic or street shoes that do not extend above the ankles. No boots are permitted. Up to one sweatshirt or clothing suitable for prevailing weather are allowed. NO GLOVES MAY BE WORN |
| Shooting Position: | The standard standing position used in position shooting is permitted. |
| Scoring: | Metallic targets knocked down in a non-vertical position or off the stand in order are scored as hits, those not knocked down or shot out of order are scored as misses. Paper targets where the outline is touched by the shot will be counted as a hit. Target outlines not touched or targets shot out of order are scored as misses. |
| Rule book: | NRA Rifle Silhouette Rules (January 2020 Edition) https://competitions.nra.org/media/7825/nra-silhouette-rifle-rulebook.pdf |

Air Pistol

General Rules

1. **Inspection:** There will be an inspection/weigh-in station. It is the responsibility of each participant and their coaches to ensure the pistols they will be using during the competition meet the rules listed in the State Contest Rulebook. Any pistols found not meeting the listed specifications will have a chance to be fixed, if unable to be adjusted in a timely manner that firearm will be disqualified and participant will need to use another firearm.
2. **Firing Line:** No portion of the participant's body may rest upon or touch the ground in advance of the firing line or be more than six (6) inches behind the firing line.
3. **Clear Bore Indicators (C.B.I.'s):** All participants will use C.B.I.'s that are required to extend a minimum of three (3) inches past the muzzle and the action when not firing, they may be any color.
4. **Eye Protection:** All participants and other personnel in the immediate vicinity of the ranges are to wear eye protection.
5. **Spotting Scopes:** Spotting scopes or binoculars will be allowed throughout the match. Spotting Scope bases may be ahead of the firing line, however, the eyepiece of the spotting scope must remain behind the firing line.
6. **Coaching:** Coaching is permitted during the sight-in period only. The coach may assist the participant during this time by calling the shots, checking time, checking score, ordering sight changes, etc., but may not physically assist the participant in loading, *cocking, adjusting positions or making sight corrections. The coach must control their voice and actions as not to disturb other participants. A participant may have no more than one (1) coach on the line during the sight-in period. Coaching will not be allowed from the spectator area. *A participant may have assistance with the cocking of the firearm with prior approval of the superintendent.
7. **Action Open:** Unless cased, all actions are to remain open. a. No participant will aim toward the targets until the proper command is given. b. No firearm will be handled in any manner to violate any safety rule.
8. **Cased Firearms:** Firearms are to remain cased until reaching the designated staging area or firing line.
9. **Firearms Unloaded:** The firearm may not be loaded until the participant has taken position at his or her firing point, firearm pointed toward the target and the command has been given.
10. **Cease Fire:** All participants will stop and repeat the command. Loaded firearms will remain pointed down range upon the command "Cease Fire." Actions will remain open and chambers up.
11. **Discipline:** The safety of participants, range personnel and spectators requires all to give continuous attention to careful handling of firearms and caution while moving about the range.
12. **Delaying a Match:** No participant may delay the start of the match through tardiness in reporting or undue delay in preparing to fire.

Equipment - Two models of Air Pistols or facsimile are NOT allowed in this event due to safety concerns. These include Air Venturi V10 Target Pistol and Stoeger XP4 or similar models that have a breakover barrel.

1. Firearms shall be .177 caliber. Lead pellets only. Wadcutter-type pellets only (flat head). No domed, sabot or pointed heads on pellets allowed.
2. Firearms may be a single shot or a revolver (single or double action)
3. Semi-automatic firearms will be allowed if properly and safely demonstrated that they can be loaded one pellet at a time.
4. Only open sights will be allowed.
5. Eye protection is required at all times while on the firing line.
6. In the standing position, no supports are permitted, including leaning on or against benches or tables. The standing position is a free hand position. No part of the arm(s) may be braced on any part of the body.
7. Equipment malfunctions shall be reported to the line official.
8. No loaded air pistol shall be raised more than 60° above the horizontal shooting plane.
9. All air pistols must remain in a case until on the firing line.

Scoring

1. Excessive shots on a target – i.e. - 11 shots on a 10 bull target: From the back side of the target count total number of holes. If the total number of holes is more than the course of fire dictates, the participant will lose the highest scoring shot of the target for each excessive shot on the target.
2. Cross Fires: Defined as one participant's shot to another participant's target. All cross fires must be reported to the line official immediately, before the allotted relay time expires. The line official must sign off on all cross fires or they will be scored as excessive shots.
3. Scoring will be completed via the ORION scoring system. Participants will post their targets but will not touch their targets after the course of fire, range safety officers will collect targets and turn them in.
4. Scoring will be decimal scores as to give a more accurate score and cut down on tie breakers. If scores are tied after the decimal system, number of highest 10s (10 xs) will be used, then 9s, and so on.
5. Participants will have a 15 minute period immediately after the end of the contest to examine targets and protest any scores. Parents, coaches, spectators are NOT allowed to assist in this process. Since ORION is being used, targets will not be plugged but may be re-scanned. At the conclusion of this process, Participants are to verify and sign stating they received and agree with their scores.
6. If ORION fails, targets will be scored by hand and will follow last year's scoring rules (event management will give instructions to youth in this scenario)

SLOW FIRE –BULLSEYE

| | |
|---------------------------|---|
| Target: | NRA B-40/4 |
| Target Height: | SENIORS: Middle of target at 55" |
| Distance: | 10 meters or 33 feet. |
| Course of Fire: | 40 shots, 20 shot strings, 5 shots per bull. |
| Time Limit: | <u>1 minute per record shot (20 minutes per string)</u> <u>5</u> min for unlimited sighting shots. |
| Shooting Position: | One handed hold, standing. |
| Equipment: | Any 4.5 mm (.177 cal.) compressed air, CO2, or pneumatic air pistol that conforms to the pistol specifications listed here or in the NGB rules Pistol weight: 1500-gram maximum (3.3 lbs.) Trigger pull weight: 500-gram minimum Pistol must fit within confines of a box having inside dimensions of 420mm x 200mm x 57mm* (approximately 16.53" x 7.87" x 2.25"). Only open sights are allowed. Optical, mirror, telescope, laser-beam, electronically projected dot sights, etc. are prohibited. |
| Clothing: | Shoes are restricted to soft, low cut, athletic or street shoes that do not extend above the ankles. No boots are permitted. |
| Rule book: | International Shooting Sport Federation: https://www.issf-sports.org/getfile.aspx?mod=docf&pane=1&inst=461&file=Pistol%20Rules.pdf |

SINGLE SHOT RAPID FIRE

Target: NRA B-40/4 or B-40

Target Height: **SENIORS** – Middle of target at 55"

Distance: 10 meters or 33 feet.

Course of Fire: 40 record shots. 5 shots per bull.

Time Limit: Timed-fire: Load Command: 20 seconds to load firearm with single pellet, charge if needed and grip the pistol
Ready Command: 5(+ or -) seconds at "Ready" position
Start Command: "Start", then 3 seconds to fire the shot
Stop Command: "Stop" announced after the 3 second period

Late Fired Shot: The participant will be penalized their highest score on the bullseye they are currently shooting for each late shot. Another shot will be taken on the same bullseye to replace the late shot taken.

Shooting Position: One-handed hold; standing.

Equipment: Any 4.5 mm (.177 cal.) compressed air, CO2, or pneumatic air pistol that conforms to the pistol specifications listed here or in the NGB rules Pistol weight: 1500-gram maximum (3.3 lbs.) Trigger pull weight: 500-gram minimum Pistol must fit within confines of a box having inside dimensions of 420mm x 200mm x 57mm* (approximately 16.53" x 7.87" x 2.25"). Only open sights are allowed. Optical, mirror, telescope, laser-beam, electronically projected dot sights, etc. are prohibited.

Clothing: Shoes are restricted to soft, low cut, athletic or street shoes that do not extend above the ankles. **No boots are permitted.**

Rule book: International Shooting Sport Federation: <https://www.issf-sports.org/getfile.aspx?mod=docf&pane=1&inst=461&file=Pistol%20Rules.pdf>

AIR PISTOL SILHOUETTE

Target: Individual Animal Figure Pages

Target Height: **SENIORS** – Middle of target at 55"

Course of Fire: 10 chickens at 10 meters

10 pigs at 10 meters

10 turkeys at 10 meters

10 rams at 10 meters

Banks of 5 targets and shooting from left to right on each bank of targets.

| | |
|---------------------------|---|
| Time Limit: | 30 seconds ready time and 2 minutes firing time for each bank of 5 targets. |
| Equipment: | Any air pistol caliber .177 equipped with any sights that do not project an image on the target and having a safe trigger. |
| Clothing: | Shoes are restricted to soft, low cut, athletic or street shoes that do not extend above the ankles. No boots are permitted. |
| Shooting Position: | Only standing positions may be used, two-hand holds permitted but the hands and arms must be free of the body and may not touch beyond the wrists (NRA Rule 5.8). |
| Scoring: | <p>Metallic targets knocked down or off the stand in order are scored as hits, those not knocked down or shot out of order are scored as misses.</p> <p>Paper targets where the outline is touched by the shot will be counted as a hit. Target outlines not touched or targets shot out of order are scored as misses.</p> |
| Rule book: | <p>NRA Pistol Silhouette Rules (January 2020 Edition)</p> <p>https://competitions.nra.org/media/7824/nra-silhouette-pistol-rulebook.pdf</p> |

HUNTING SKILLS EVENTS

****2023 Hunting Skills National Qualifier will consist of 3D Archery, wildlife skills test, and Orienteering. Youth must register for the Archery contest (if not interested in competing in the whole archery contest please note hunting skills only on the registration) and have their archery instructor AND their Hunting Skills instructor sign off on the registration.****

- At the Oklahoma 4-H Shooting Sports Hunting Skills event, all hunting skills events will be based on the content of the following resources:

4-H Shooting Sports Hunting Leader Manual, Revised May 2014

4-H Shooting Sports Member Manual, New, May, 2014

Contact your County 4-H Hunting Skills Instructor or state 4-H Shooting Sports Coordinator to obtain a copy of these manuals.

- NRA Hunters Guide

<http://materials.nrahq.org/recreation-shooting/hunting/the-hunters-guide.html>

or NRA Store- 1-800-336-7402 \$10.00/copy

- Federal Cartridge Company wildlife guides:

Illustrated Guide to Upland Game Birds

Illustrated Guide to Ducks, Geese and Swans

Illustrated Guide to Small Game and Furbearers

Illustrated Guide to Big Game Animals

<https://4h.unl.edu/4hssnationalchamp/rules-forms>

This is a national hunting skills evaluation. Any species covered in the listed resources may be included in the contest, including any game or furbearing animal north of Mexico in North America. Participants may expect some focus on species found in the host state, but events will only include species found in the listed resources.

Participants must provide:

Clipboard, Pens or pencils, Ruler or Tape

Orienteering compass, Protractor, Eye and Ear Protection

Suitable field clothing and footwear Sunscreen (recommended)

Shooting Equipment: Participants must provide their own archery equipment, firearms and ammunition for the live-fire events, but they must meet the restrictions listed below. No equipment is provided.

HUNTER DECISION-MAKING

Event Description: This is a typical decision-making event, with a scenario and four possible choices for each of the stations. Contestants must rank the choices in order of preference based upon their knowledge of the wildlife materials. Participants may be asked to give oral reasons or written reasons for their placing. This contest is similar to a 4-H judging contest. Any equipment or methods in the 4-H manuals are fair game. Course Up to 20 Decision-making stations based upon content of the resources listed above.

Time Limit Maximum of 10 minutes per station, plus adequate time, up to one hour for written reasons or prepare for oral reasons.

Scoring 50 points per station, if reasons classes are used they will be worth 50 points per reasons class. Contest officials will determine the correct placing and the point cuts for each class. A Hormel "calculator" is used in the scoring.

HUNTING SKILLS

Event Description Any skill-based element in the manual may be tested here, including map and compass, aerial photo interpretation, live firing with smallbore rifle, shotgun or archery equipment, track and sign interpretation, selection of a stand or blind site, and more. If it is a hunting related skill, it may be included in this contest.

2023- Contestants will shoot Archery – 3D for the live fire portion of the contest.

Course: No set course can be predicted, it will depend on the terrain, facility, skills selected for testing, etc. Stations for each Hunting Skill task will be designed as needed. Live-fire situations will not be "formal" courses of fire, but will seek to imitate hunting situations.

Equipment Only in case of malfunction may a participant change firearm or bow during the activity. No Rangefinders permitted.

Shooting Equipment must meet the following guidelines:

Small Bore Rifle: Any safe rifle in .22 rim fire caliber; maximum weight including sights of 8.0 pounds with safe hunting triggers (at least 2.5 pounds). Scopes no greater than 6X. If variable scopes are used, they must be taped by the Range Officer before the beginning of the event at no greater than 6X. Range-finder reticules are not permitted.

Bipods, other supporting devices or shooting sticks are not allowed or even to be attached to the firearm.

Standard velocity .22 LR ammunition or high velocity .22 LR ammunition is allowed...no "hyper" velocity rounds. A hunting- style sling no more than 1 ½ inches in width is permitted. All small bore rifles are required to use an ECI (Empty Chamber Indicator).

Shotgun: 12 gauge or smaller, capable of 2 shots without reloading, with standard factory target or factory field loads of no more than 1 1/8 ounces of shot and shot no larger than #7 1/2. No hand loads.

Bow: Recurve or compound suitable for hunting (no crossbows), drawing no more than 60 pounds with suitable arrows tipped with field points only (no broadhead tips), are permitted. Hunting sights that are fixed with no more than 4 sighting pins. Pins may not be adjusted once the day's competition begins. Any sight pins exceeding the 4 pin maximum will be taped or removed. Stabilizers are limited to a maximum length of 12 inches. All shooting will be at unmarked distances.

Maximum distance to target:

Compound – 50 yards

Recurve – 35 yards

WILDLIFE ID and MANAGEMENT

Event Description: This section includes wildlife identification, wildlife management, and wildlife management techniques or problems. Participants will be asked to identify specimens or parts of specimens (skulls, skins, wings, single feathers, antlers/horns) tracks, scat or other sign. In addition, questions relating to relatively simple wildlife management or ecology may be posed, e.g. habitat type preference, breeding or loafing habitat, primary activity times, etc.

Course: 20 stations requiring identification, analysis, or interpretation.

Time Limit: Participants will move through the course expeditiously without undue delay

Scoring: TBA