

# Bioenergy History Cards

## **Instructions:**

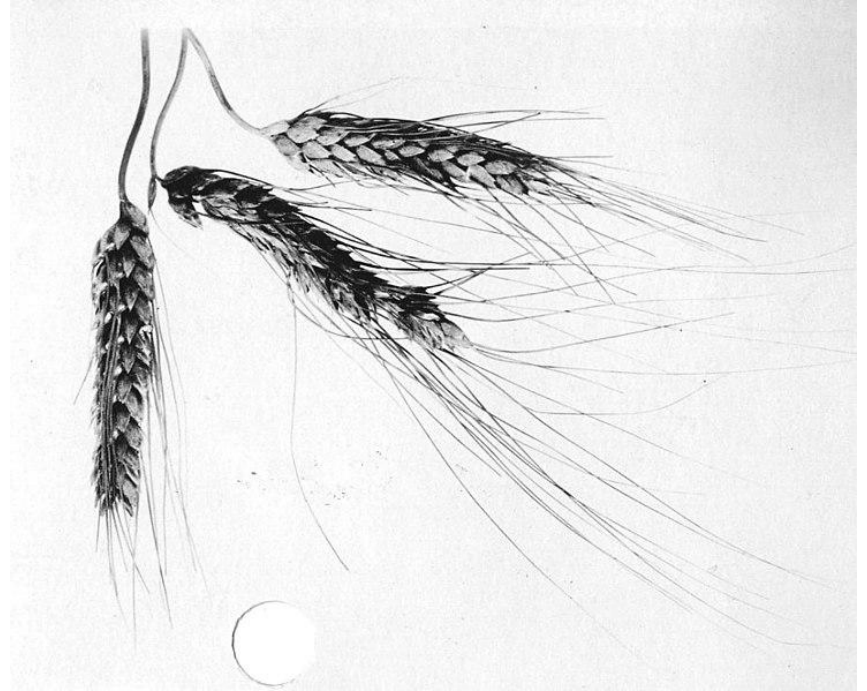
Print one set for each group of 3-4 students.

You may cut and fold on the dotted line to provide hints for your students, if you'd like.

Students need to place the cards in chronological order (based on historic record) of which biomass sources were used by humans from oldest to most recent, include inventions in the timeline as well.

**Fire provides heat and light for humankind.**

**Wheat can be used to make ethanol through fermentation.**

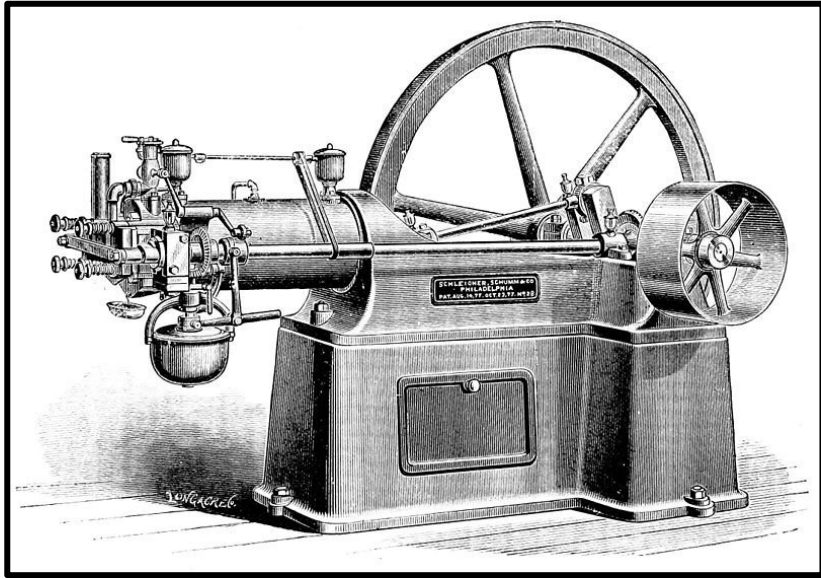


**Animal and vegetable oils  
are burned for heat and  
light.**

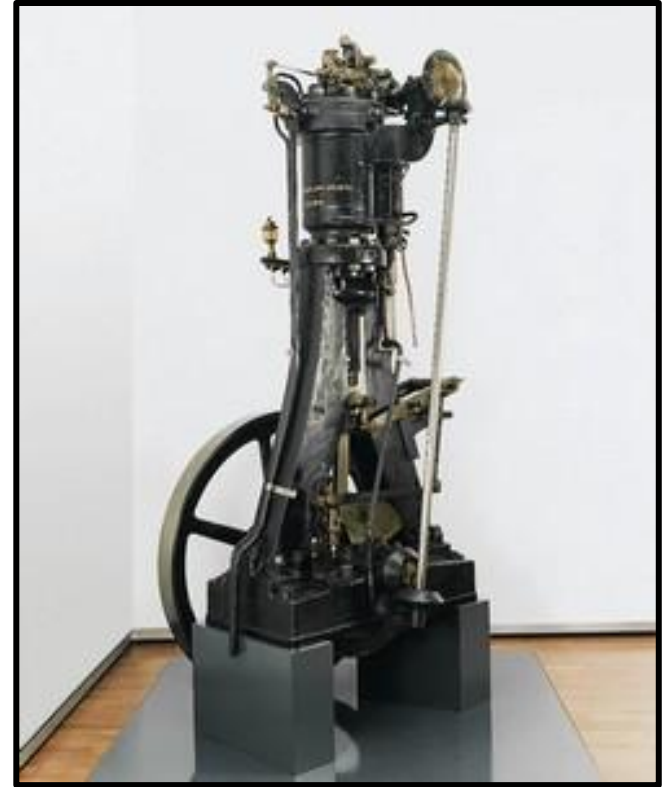
**The sap from pine trees  
can be used to make  
ships water worthy and  
create a fuel for lamps.**



**This engine used ethanol  
and turpentine as the fuel.**

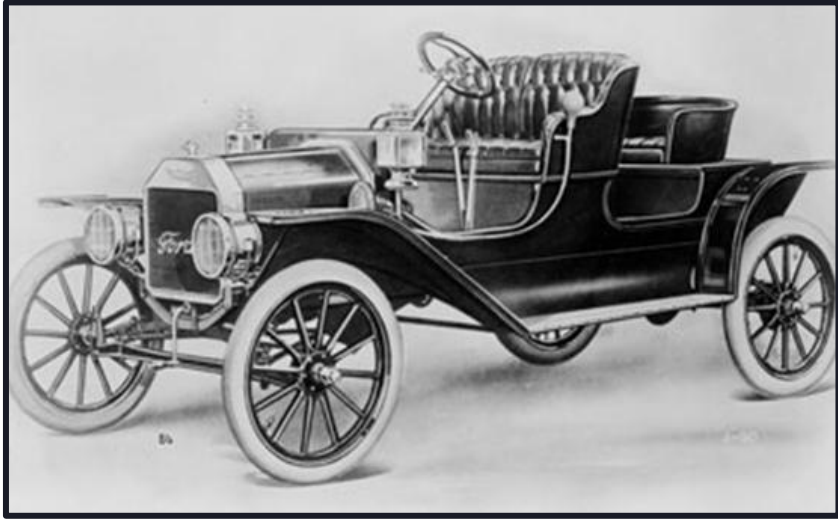


**This engine used high  
amounts of  
compression to ignite  
its fuel, no spark.**





**This vehicle could run  
on ethanol or gasoline.**



**Algae can be used for  
oils and to make  
plastics.**

